

Mad2L2 Rabbit Monoclonal Antibody



CAB4630

Product Information

Size:

20uL, 50uL, 100uL, 200uL

Observed MW:

24KDa

Calculated MW:

24kDa

Applications:

WB IHC IF

Reactivity:

Human, Mouse, Rat

Protein Background

The protein encoded by this gene is a component of the mitotic spindle assembly checkpoint that prevents the onset of anaphase until all chromosomes are properly aligned at the metaphase plate. The encoded protein, which is similar to MAD2L1, is capable of interacting with ADAM9, ADAM15, REV1, and REV3 proteins. [provided by RefSeq, Jul 2008]

Immunogen information

Gene ID:

10459

Uniprot

Q9UI95

Synonyms:

FANCV; MAD2B; POLZ2; REV7

Antibody Information

Recommended dilutions:

WB 1:500 - 1:2000 IHC 1:50
- 1:200 IF 1:50 - 1:200

Source:

Rabbit

Isotype:

IgG

Purification:

Affinity purification

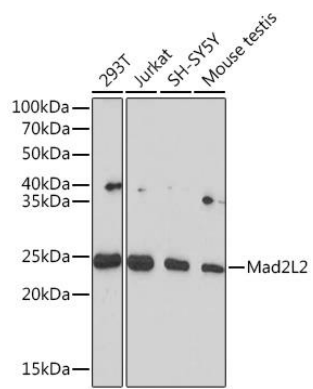
Immunogen:

A synthesized peptide derived from human Mad2L2

Storage:

Store at -20°C. Avoid freeze / thaw cycles. Buffer: PBS with 0.02% sodium azide, 0.05% BSA, 50% glycerol, pH7.3.

Product Images



Western blot - Mad2L2 Rabbit mAb (CAB4630)