

SQS/FDFT1 Rabbit Monoclonal Antibody



CAB4651

Product Information

Size:

20uL, 50uL, 100uL, 200uL

Observed MW:

48KDa

Calculated MW:

48kDa

Applications:

WB

Reactivity:

Human, Mouse, Rat

Protein Background

This gene encodes a membrane-associated enzyme located at a branch point in the mevalonate pathway. The encoded protein is the first specific enzyme in cholesterol biosynthesis, catalyzing the dimerization of two molecules of farnesyl diphosphate in a two-step reaction to form squalene. [provided by RefSeq, Jul 2008]

Immunogen information

Gene ID:

2222

Uniprot

P37268

Synonyms:

DGPT; ERG9; SQS; SS

Antibody Information

Recommended dilutions:

WB 1:500 - 1:2000

Source:

Rabbit

Isotype:

IgG

Purification:

Affinity purification

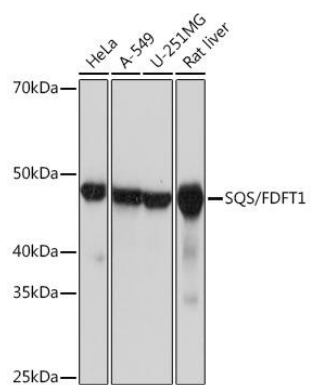
Immunogen:

A synthesized peptide derived from human SQS/FDFT1

Storage:

Store at -20°C. Avoid freeze / thaw cycles. Buffer: PBS with 0.02% sodium azide, 0.05% BSA, 50% glycerol, pH7.3.

Product Images



Western blot - SQS/FDFT1 Rabbit mAb (CAB4651)