

Eg5 Rabbit Monoclonal Antibody



CAB4659

Product Information

Size:

20uL, 50uL, 100uL, 200uL

Observed MW:

130KDa

Calculated MW:

119kDa

Applications:

WB

Reactivity:

Human

Protein Background

This gene encodes a motor protein that belongs to the kinesin-like protein family. Members of this protein family are known to be involved in various kinds of spindle dynamics. The function of this gene product includes chromosome positioning, centrosome separation and establishing a bipolar spindle during cell mitosis. [provided by RefSeq, Jul 2008]

Immunogen information

Gene ID:

3832

Uniprot

P52732

Synonyms:

EG5; HKSP; KNSL1; MCLMR; TRIP5

Antibody Information

Recommended dilutions:

WB 1:500 - 1:2000

Source:

Rabbit

Isotype:

IgG

Purification:

Affinity purification

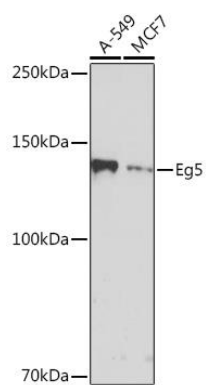
Immunogen:

A synthesized peptide derived from human Eg5

Storage:

Store at -20°C. Avoid freeze / thaw cycles. Buffer: PBS with 0.02% sodium azide, 0.05% BSA, 50% glycerol, pH7.3.

Product Images



Western blot - Eg5 Rabbit mAb (CAB4659)