

# K Cadherin Rabbit Monoclonal Antibody



**CAB4689**

---

## Product Information

### Size:

20uL, 50uL, 100uL, 200uL

### Observed MW:

130KDa

### Calculated MW:

130kDa

### Applications:

WB

### Reactivity:

Human, Mouse, Rat

## Protein Background

This gene encodes a member of the cadherin superfamily. Cadherins are membrane glycoproteins that mediate homophilic cell-cell adhesion and play critical roles in cell differentiation and morphogenesis. The encoded protein is a type II cadherin and may play a role in kidney development as well as endometrium and placenta formation. Decreased expression of this gene may be associated with tumor growth and metastasis. [provided by RefSeq, May 2011]

## Immunogen information

### Gene ID:

1004

### Uniprot

P55285

### Synonyms:

CAD6; KCAD

## Antibody Information

### Recommended dilutions:

WB 1:500 - 1:2000

### Source:

Rabbit

### Isotype:

IgG

### Purification:

Affinity purification

### Immunogen:

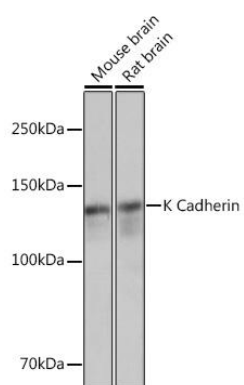
A synthesized peptide derived from human K Cadherin

### Storage:

Store at -20°C. Avoid freeze / thaw cycles. Buffer: PBS with 0.02% sodium azide, 0.05% BSA, 50% glycerol, pH7.3.

## Product Images

---



Western blot - K Cadherin Rabbit mAb (CAB4689)