

# Villin-1 Rabbit Monoclonal Antibody



**CAB4691**

---

## Product Information

### Size:

20uL, 50uL, 100uL, 200uL

### Observed MW:

95KDa

### Calculated MW:

93kDa

### Applications:

WB

### Reactivity:

Human

## Protein Background

This gene encodes a member of a family of calcium-regulated actin-binding proteins. This protein represents a dominant part of the brush border cytoskeleton which functions in the capping, severing, and bundling of actin filaments. Two mRNAs of 2.7 kb and 3.5 kb have been observed; they result from utilization of alternate poly-adenylation signals present in the terminal exon. [provided by RefSeq, Jul 2008]

## Immunogen information

### Gene ID:

7429

### Uniprot

P09327

### Synonyms:

D2S1471; VIL

## Antibody Information

### Recommended dilutions:

WB 1:500 - 1:2000

### Source:

Rabbit

### Isotype:

IgG

### Purification:

Affinity purification

### Immunogen:

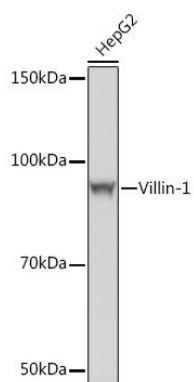
A synthesized peptide derived from human Villin-1

### Storage:

Store at -20°C. Avoid freeze / thaw cycles. Buffer: PBS with 0.02% sodium azide, 0.05% BSA, 50% glycerol, pH7.3.

## Product Images

---



Western blot - Villin-1 Rabbit mAb (CAB4691)