

RSK1 p90 Rabbit Monoclonal Antibody



CAB4695

Product Information

Size:

20uL, 50uL, 100uL, 200uL

Observed MW:

83KDa

Calculated MW:

90kDa

Applications:

WB

Reactivity:

Human, Mouse

Protein Background

This gene encodes a member of the RSK (ribosomal S6 kinase) family of serine/threonine kinases. This kinase contains 2 nonidentical kinase catalytic domains and phosphorylates various substrates, including members of the mitogen-activated kinase (MAPK) signalling pathway. The activity of this protein has been implicated in controlling cell growth and differentiation. Alternate transcriptional splice variants, encoding different isoforms, have been characterized. [provided by RefSeq, Jul 2008]

Immunogen information

Gene ID:

6195

Uniprot

Q15418

Synonyms:

HU-1; MAPKAPK1A; RSK; RSK1; p90Rsk

Antibody Information

Recommended dilutions:

WB 1:500 - 1:2000

Source:

Rabbit

Isotype:

IgG

Purification:

Affinity purification

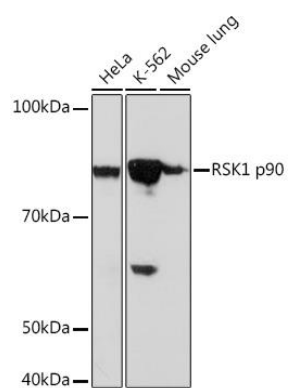
Immunogen:

A synthesized peptide derived from human RSK1 p90

Storage:

Store at -20°C. Avoid freeze / thaw cycles. Buffer: PBS with 0.02% sodium azide, 0.05% BSA, 50% glycerol, pH7.3.

Product Images



Western blot - RSK1 p90 Rabbit mAb (CAB4695)