

TCP1 beta Rabbit Monoclonal Antibody



CAB4700

Product Information

Size:

20uL, 50uL, 100uL, 200uL

Observed MW:

57KDa

Calculated MW:

57kDa

Applications:

WB IHC

Reactivity:

Human, Mouse, Rat

Protein Background

The protein encoded by this gene is a molecular chaperone that is a member of the chaperonin containing TCP1 complex (CCT), also known as the TCP1 ring complex (TRiC). This complex consists of two identical stacked rings, each containing eight different proteins. Unfolded polypeptides enter the central cavity of the complex and are folded in an ATP-dependent manner. The complex folds various proteins, including actin and tubulin. Two transcript variants encoding different isoforms have been found for this gene. [provided by RefSeq, Nov 2010]

Immunogen information

Gene ID:

10576

Uniprot

P78371

Synonyms:

99D8.1; CCT-beta; CCTB; HEL-S-100n; PRO1633; TCP-1-beta

Antibody Information

Recommended dilutions:

WB 1:500 - 1:2000 IHC 1:50 - 1:200

Source:

Rabbit

Isotype:

IgG

Purification:

Affinity purification

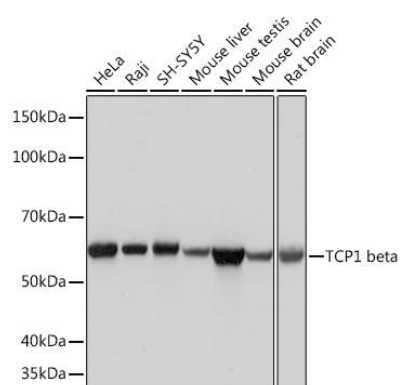
Immunogen:

A synthesized peptide derived from human TCP1 beta

Storage:

Store at -20°C. Avoid freeze / thaw cycles. Buffer: PBS with 0.02% sodium azide, 0.05% BSA, 50% glycerol, pH7.3.

Product Images



Western blot - TCP1 beta Rabbit mAb (CAB4700)