

LOXL2 Rabbit Monoclonal Antibody



CAB4708

Product Information

Size:

20uL, 50uL, 100uL, 200uL

Observed MW:

100KDa

Calculated MW:

53, 106kDa

Applications:

WB IHC

Reactivity:

Human

Antibody Information

Recommended dilutions:

WB 1:500 - 1:2000 IHC 1:50
- 1:200

Source:

Rabbit

Isotype:

IgG

Purification:

Affinity purification

Protein Background

This gene encodes a member of the lysyl oxidase gene family. The prototypic member of the family is essential to the biogenesis of connective tissue, encoding an extracellular copper-dependent amine oxidase that catalyses the first step in the formation of crosslinks in collagens and elastin. A highly conserved amino acid sequence at the C-terminus end appears to be sufficient for amine oxidase activity, suggesting that each family member may retain this function. The N-terminus is poorly conserved and may impart additional roles in developmental regulation, senescence, tumor suppression, cell growth control, and chemotaxis to each member of the family. [provided by RefSeq, Jul 2008]

Immunogen information

Gene ID:

4017

Uniprot

Q9Y4K0

Synonyms:

LOR; LOR2; WS9-14

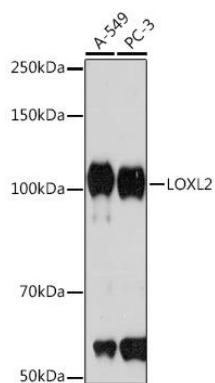
Immunogen:

A synthesized peptide derived from human LOXL2

Storage:

Store at -20°C. Avoid freeze / thaw cycles. Buffer: PBS with 0.02% sodium azide, 0.05% BSA, 50% glycerol, pH7.3.

Product Images



Western blot - LOXL2 Rabbit mAb (CAB4708)