

Ras Rabbit Monoclonal Antibody



CAB4735

Product Information

Size:

20uL, 50uL, 100uL, 200uL

Observed MW:

20KDa

Calculated MW:

18kDa

Applications:

WB IF

Reactivity:

Human, Mouse, Rat

Antibody Information

Recommended dilutions:

WB 1:500 - 1:2000 IF 1:50 - 1:200

Source:

Rabbit

Isotype:

IgG

Purification:

Affinity purification

Protein Background

This is an N-ras oncogene encoding a membrane protein that shuttles between the Golgi apparatus and the plasma membrane. This shuttling is regulated through palmitoylation and depalmitoylation by the ZDHHC9-GOLGA7 complex. The encoded protein, which has intrinsic GTPase activity, is activated by a guanine nucleotide-exchange factor and inactivated by a GTPase activating protein. Mutations in this gene have been associated with somatic rectal cancer, follicular thyroid cancer, autoimmune lymphoproliferative syndrome, Noonan syndrome, and juvenile myelomonocytic leukemia. [provided by RefSeq, Jun 2011]

Immunogen information

Gene ID:

4893

Uniprot

P01111/P01112/P01116_

Synonyms:

ALPS4; CMNS; N-ras; NCMS; NRAS1; NS6

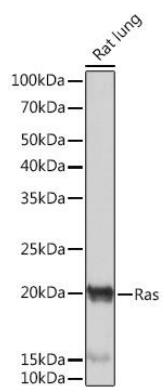
Immunogen:

A synthesized peptide derived from human Ras

Storage:

Store at -20°C. Avoid freeze / thaw cycles. Buffer: PBS with 0.02% sodium azide, 0.05% BSA, 50% glycerol, pH7.3.

Product Images



Western blot - Ras Rabbit mAb (CAB4735)