

# Cytokeratin 7 Rabbit Monoclonal Antibody



CAB4765

---

## Product Information

### Size:

20uL, 50uL, 100uL, 200uL

### Observed MW:

52KDa

### Calculated MW:

51kDa

### Applications:

WB IHC

### Reactivity:

Human, Mouse, Rat

## Antibody Information

### Recommended dilutions:

WB 1:500 - 1:2000 IHC 1:50  
- 1:200

### Source:

Rabbit

### Isotype:

IgG

### Purification:

Affinity purification

## Protein Background

The protein encoded by this gene is a member of the keratin gene family. The type II cytokeratins consist of basic or neutral proteins which are arranged in pairs of heterotypic keratin chains coexpressed during differentiation of simple and stratified epithelial tissues. This type II cytokeratin is specifically expressed in the simple epithelia lining the cavities of the internal organs and in the gland ducts and blood vessels. The genes encoding the type II cytokeratins are clustered in a region of chromosome 12q12-q13. Alternative splicing may result in several transcript variants; however, not all variants have been fully described. [provided by RefSeq, Jul 2008]

## Immunogen information

### Gene ID:

3855

### Uniprot

P08729

### Synonyms:

CK7; K2C7; K7; SCL

### Immunogen:

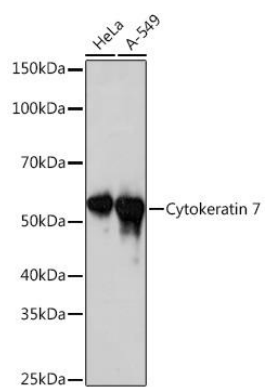
A synthesized peptide derived from human Cytokeratin 7

### Storage:

Store at -20°C. Avoid freeze / thaw cycles. Buffer: PBS with 0.02% sodium azide, 0.05% BSA, 50% glycerol, pH7.3.

## Product Images

---



Western blot - Cytokeratin 7 Rabbit mAb (CAB4765)