

Tubulin Beta 2 Rabbit Monoclonal Antibody



CAB4798

Product Information

Size:

20uL, 50uL, 100uL, 200uL

Observed MW:

50KDa

Calculated MW:

50kDa

Applications:

WB IHC IF

Reactivity:

Human, Mouse, Rat

Protein Background

Microtubules, key participants in processes such as mitosis and intracellular transport, are composed of heterodimers of alpha- and beta-tubulins. The protein encoded by this gene is a beta-tubulin. Defects in this gene are associated with complex cortical dysplasia with other brain malformations-5. Two transcript variants encoding distinct isoforms have been found for this gene. [provided by RefSeq, Jul 2015]

Immunogen information

Gene ID:

7280/347733

Uniprot

Q13885/Q9BVA1

Synonyms:

CDCBM5; TUBB; TUBB2

Antibody Information

Recommended dilutions:

WB 1:500 - 1:2000 IHC 1:50
- 1:200 IF 1:50 - 1:200

Source:

Rabbit

Isotype:

IgG

Purification:

Affinity purification

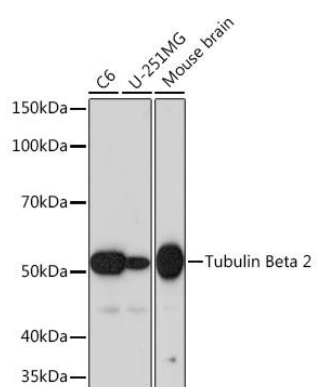
Immunogen:

A synthesized peptide derived from human Tubulin Beta 2

Storage:

Store at -20°C. Avoid freeze / thaw cycles. Buffer: PBS with 0.02% sodium azide, 0.05% BSA, 50% glycerol, pH7.3.

Product Images



Western blot - Tubulin Beta 2 Rabbit mAb (CAB4798)