

# Collagen XVII Rabbit Monoclonal Antibody



CAB4808

## Product Information

### Size:

20uL, 50uL, 100uL, 200uL

### Observed MW:

180KDa

### Calculated MW:

130, 180kDa

### Applications:

WB IHC

### Reactivity:

Human

## Antibody Information

### Recommended dilutions:

WB 1:500 - 1:2000 IHC 1:50  
- 1:200

### Source:

Rabbit

### Isotype:

IgG

### Purification:

Affinity purification

## Protein Background

This gene encodes the alpha chain of type XVII collagen. Unlike most collagens, collagen XVII is a transmembrane protein. Collagen XVII is a structural component of hemidesmosomes, multiprotein complexes at the dermal-epidermal basement membrane zone that mediate adhesion of keratinocytes to the underlying membrane. Mutations in this gene are associated with both generalized atrophic benign and junctional epidermolysis bullosa. Two homotrimeric forms of type XVII collagen exist. The full length form is the transmembrane protein. A soluble form, referred to as either ectodomain or LAD-1, is generated by proteolytic processing of the full length form. [provided by RefSeq, Jul 2008]

## Immunogen information

### Gene ID:

1308

### Uniprot

Q9UMD9

### Synonyms:

BA16H23.2; BP180; BPA-2; BPAG2; ERED; LAD-1

### Immunogen:

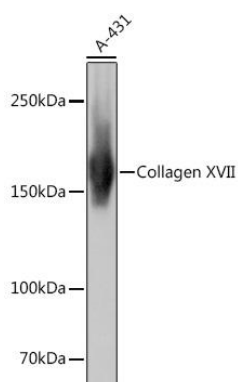
A synthesized peptide derived from human Collagen XVII

### Storage:

Store at -20°C. Avoid freeze / thaw cycles. Buffer: PBS with 0.02% sodium azide, 0.05% BSA, 50% glycerol, pH7.3.

## Product Images

---



Western blot - Collagen XVII Rabbit mAb (CAB4808)