

# PBR Rabbit Monoclonal Antibody



CAB4881

---

## Product Information

### Size:

20uL, 50uL, 100uL, 200uL

### Observed MW:

18KDa

### Calculated MW:

18kDa

### Applications:

WB IHC IF

### Reactivity:

Human, Mouse

## Protein Background

Present mainly in the mitochondrial compartment of peripheral tissues, the protein encoded by this gene interacts with some benzodiazepines and has different affinities than its endogenous counterpart. The protein is a key factor in the flow of cholesterol into mitochondria to permit the initiation of steroid hormone synthesis. Alternatively spliced transcript variants have been reported; one of the variants lacks an internal exon and is considered non-coding, and the other variants encode the same protein. [provided by RefSeq, Feb 2012]

## Immunogen information

### Gene ID:

706

### Uniprot

P30536

### Synonyms:

BPBS; BZRP; DBI; IBP; MBR; PBR; PBS; PKBS; PTBR; mDRC; pk18

## Antibody Information

### Recommended dilutions:

WB 1:500 - 1:2000 IHC 1:50  
- 1:200 IF 1:50 - 1:200

### Source:

Rabbit

### Isotype:

IgG

### Purification:

Affinity purification

### Immunogen:

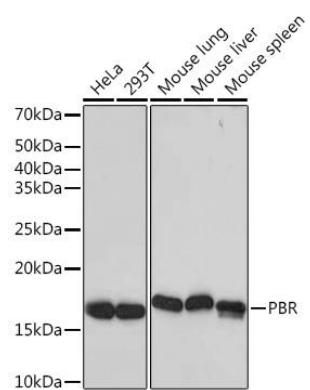
A synthesized peptide derived from human PBR

### Storage:

Store at -20°C. Avoid freeze / thaw cycles. Buffer: PBS with 0.02% sodium azide, 0.05% BSA, 50% glycerol, pH7.3.

## Product Images

---



Western blot - PBR Rabbit mAb (CAB4881)