

# alpha + beta Synuclein Rabbit Monoclonal Antibody

CAB4899



## Product Information

### Size:

20uL, 50uL, 100uL, 200uL

### Observed MW:

18KDa

### Calculated MW:

18kDa

### Applications:

WB IF

### Reactivity:

Human, Mouse, Rat

## Protein Background

Alpha-synuclein is a member of the synuclein family, which also includes beta- and gamma-synuclein. Synucleins are abundantly expressed in the brain and alpha- and beta-synuclein inhibit phospholipase D2 selectively. SNCA may serve to integrate presynaptic signaling and membrane trafficking. Defects in SNCA have been implicated in the pathogenesis of Parkinson disease. SNCA peptides are a major component of amyloid plaques in the brains of patients with Alzheimer's disease. Alternatively spliced transcripts encoding different isoforms have been identified for this gene. [provided by RefSeq, Feb 2016]

## Immunogen information

### Gene ID:

6622/6620

### Uniprot

P37840/Q16143

### Synonyms:

NACP; PARK1; PARK4; PD1

## Antibody Information

### Recommended dilutions:

WB 1:500 - 1:2000 IF 1:50 - 1:200

### Source:

Rabbit

### Isotype:

IgG

### Purification:

Affinity purification

### Immunogen:

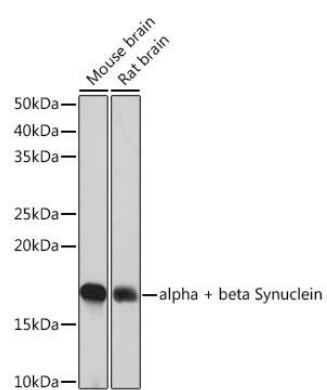
A synthesized peptide derived from human alpha + beta Synuclein

### Storage:

Store at -20°C. Avoid freeze / thaw cycles. Buffer: PBS with 0.02% sodium azide, 0.05% BSA, 50% glycerol, pH7.3.

## Product Images

---



Western blot - alpha + beta Synuclein Rabbit mAb (CAB4899)