

# SERPINA1 Rabbit Monoclonal Antibody



CAB4966

---

## Product Information

### Size:

20uL, 50uL, 100uL, 200uL

### Observed MW:

45KDa

### Calculated MW:

51kDa

### Applications:

WB

### Reactivity:

Mouse, Rat

## Protein Background

The protein encoded by this gene is secreted and is a serine protease inhibitor whose targets include elastase, plasmin, thrombin, trypsin, chymotrypsin, and plasminogen activator. Defects in this gene can cause emphysema or liver disease. Several transcript variants encoding the same protein have been found for this gene. [provided by RefSeq, Jul 2008]

## Immunogen information

### Gene ID:

5265

### Uniprot

P01009

### Synonyms:

A1A; A1AT; AAT; PI; PI1; PRO2275; alpha1AT

## Antibody Information

### Recommended dilutions:

WB 1:500 - 1:2000

### Source:

Rabbit

### Isotype:

IgG

### Purification:

Affinity purification

### Immunogen:

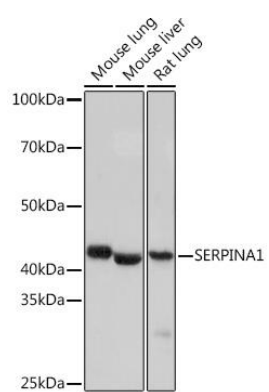
A synthesized peptide derived from human SERPINA1

### Storage:

Store at -20°C. Avoid freeze / thaw cycles. Buffer: PBS with 0.02% sodium azide, 0.05% BSA, 50% glycerol, pH7.3.

## Product Images

---



Western blot - SERPINA1 Rabbit mAb (CAB4966)