

PGDH Rabbit Monoclonal Antibody



CAB5024

Product Information

Size:

20uL, 50uL, 100uL, 200uL

Observed MW:

29KDa

Calculated MW:

29kDa

Applications:

WB IF

Reactivity:

Mouse, Rat

Protein Background

This gene encodes a member of the short-chain nonmetalloenzyme alcohol dehydrogenase protein family. The encoded enzyme is responsible for the metabolism of prostaglandins, which function in a variety of physiologic and cellular processes such as inflammation. Mutations in this gene result in primary autosomal recessive hypertrophic osteoarthropathy and cranioosteoarthropathy. Multiple transcript variants encoding different isoforms have been found for this gene. [provided by RefSeq, Mar 2009]

Immunogen information

Gene ID:

3248

Uniprot

P15428

Synonyms:

15-PGDH; PGDH; PGDH1; PHOAR1; SDR36C1

Antibody Information

Recommended dilutions:

WB 1:500 - 1:2000 IF 1:50 - 1:200

Source:

Rabbit

Isotype:

IgG

Purification:

Affinity purification

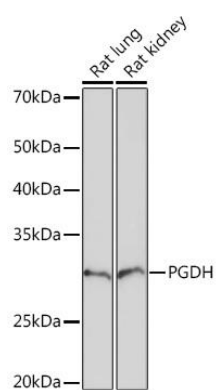
Immunogen:

A synthesized peptide derived from human PGDH

Storage:

Store at -20°C. Avoid freeze / thaw cycles. Buffer: PBS with 0.02% sodium azide, 0.05% BSA, 50% glycerol, pH7.3.

Product Images



Western blot - PGDH Rabbit mAb (CAB5024)