

ATPIF1 Rabbit Polyclonal Antibody



CAB5099

Product Information

Size:

20uL, 50uL, 100uL, 200uL

Observed MW:

12kDa

Calculated MW:

6kDa/7kDa/12kDa

Applications:

WB IHC IF

Reactivity:

Human, Mouse

Antibody Information

Recommended dilutions:

WB 1:500 - 1:2000 IHC 1:50
- 1:100 IF 1:50 - 1:100

Source:

Rabbit

Isotype:

IgG

Purification:

Affinity purification

Protein Background

This gene encodes a mitochondrial ATPase inhibitor. Alternative splicing occurs at this locus and three transcript variants encoding distinct isoforms have been identified.

Immunogen information

Gene ID:

93974

Uniprot

Q9UII2

Synonyms:

ATPIF1; ATP1; ATP1P; IP

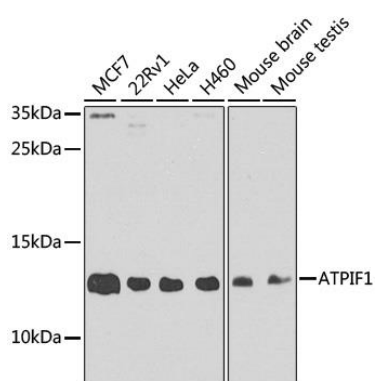
Immunogen:

Recombinant fusion protein containing a sequence corresponding to amino acids 26-106 of human ATPIF1 (NP_057395.1).

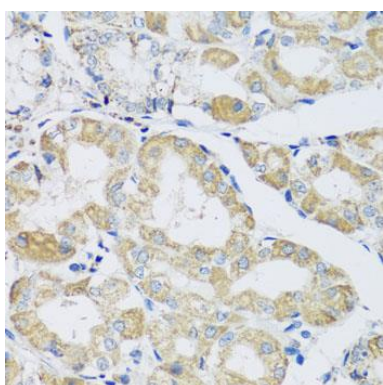
Storage:

Store at -20°C. Avoid freeze / thaw cycles. Buffer: PBS with 0.02% sodium azide, 50% glycerol, pH7.3.

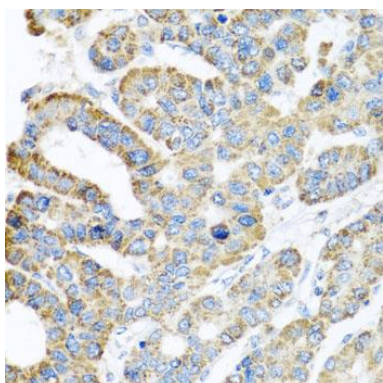
Product Images



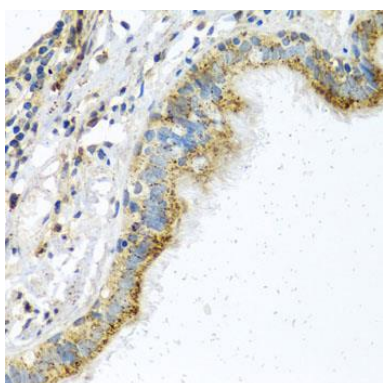
Western blot analysis of extracts of various cell lines, using ATPIF1 antibody (CAB5099) at 1:1000 dilution. Secondary antibody: HRP Goat Anti-Rabbit IgG (H+L) (CABS014) at 1:10000 dilution. Lysates/proteins: 25ug per lane. Blocking buffer: 3% nonfat dry milk in TBST. Detection: ECL Basic Kit (CABM00020). Exposure time: 90s.



Immunohistochemistry of paraffin-embedded human stomach using ATPIF1 antibody (CAB5099) at dilution of 1:100 (40x lens).



Immunohistochemistry of paraffin-embedded human liver cancer using ATPIF1 antibody (CAB5099) at dilution of 1:100 (40x lens).



Immunohistochemistry of paraffin-embedded human trachea using ATPIF1 antibody (CAB5099) at dilution of 1:100 (40x lens).