

RUNX1/2/3 Rabbit Monoclonal Antibody



CAB5115

Product Information

Size:

20uL, 50uL, 100uL, 200uL

Observed MW:

45-55KDa

Calculated MW:

51kDa

Applications:

WB

Reactivity:

Human, Mouse

Protein Background

Core binding factor (CBF) is a heterodimeric transcription factor that binds to the core element of many enhancers and promoters. The protein encoded by this gene represents the alpha subunit of CBF and is thought to be involved in the development of normal hematopoiesis. Chromosomal translocations involving this gene are well-documented and have been associated with several types of leukemia. Three transcript variants encoding different isoforms have been found for this gene. [provided by RefSeq, Jul 2008]

Immunogen information

Gene ID:

861

Uniprot

Q01196/Q13761/Q13950

Synonyms:

AML1; AML1-EVI-1; AMLCR1; CBF2alpha; CBFA2; EVI-1; PEBP2aB; PEBP2alpha

Antibody Information

Recommended dilutions:

WB 1:500 - 1:2000

Source:

Rabbit

Isotype:

IgG

Purification:

Affinity purification

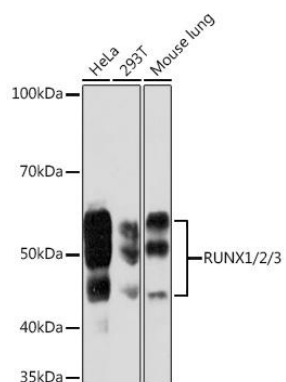
Immunogen:

A synthesized peptide derived from human RUNX1/2/3

Storage:

Store at -20°C. Avoid freeze / thaw cycles. Buffer: PBS with 0.02% sodium azide, 0.05% BSA, 50% glycerol, pH7.3.

Product Images



Western blot - RUNX1/2/3 Rabbit mAb (CAB5115)