

# TSC1 Rabbit Monoclonal Antibody



CAB5121

---

## Product Information

### Size:

20uL, 50uL, 100uL, 200uL

### Observed MW:

150KDa

### Calculated MW:

150kDa

### Applications:

WB

### Reactivity:

Human

## Protein Background

This gene encodes a growth inhibitory protein thought to play a role in the stabilization of tuberlin. Mutations in this gene have been associated with tuberous sclerosis. Alternative splicing results in multiple transcript variants. [provided by RefSeq, Jun 2009]

## Immunogen information

### Gene ID:

7248

### Uniprot

Q92574

### Synonyms:

LAM; TSC

## Antibody Information

### Recommended dilutions:

WB 1:500 - 1:2000

### Source:

Rabbit

### Isotype:

IgG

### Purification:

Affinity purification

### Immunogen:

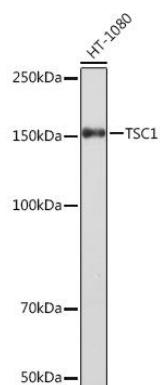
A synthesized peptide derived from human Hamartin

### Storage:

Store at -20°C. Avoid freeze / thaw cycles. Buffer: PBS with 0.02% sodium azide, 0.05% BSA, 50% glycerol, pH7.3.

## Product Images

---



Western blot - TSC1 Rabbit mAb (CAB5121)