

ApoM Rabbit Monoclonal Antibody



CAB5144

Product Information

Size:

20uL, 50uL, 100uL, 200uL

Observed MW:

21KDa

Calculated MW:

25kDa

Applications:

WB IF

Reactivity:

Human, Mouse

Protein Background

The protein encoded by this gene is an apolipoprotein and member of the lipocalin protein family. It is found associated with high density lipoproteins and to a lesser extent with low density lipoproteins and triglyceride-rich lipoproteins. The encoded protein is secreted through the plasma membrane but remains membrane-bound, where it is involved in lipid transport. Alternate splicing results in both coding and non-coding variants of this gene. [provided by RefSeq, Jan 2012]

Immunogen information

Gene ID:

55937

Uniprot

O95445

Synonyms:

G3a; HSPC336; NG20; apo-M

Antibody Information

Recommended dilutions:

WB 1:500 - 1:2000 IF 1:50 - 1:200

Source:

Rabbit

Isotype:

IgG

Purification:

Affinity purification

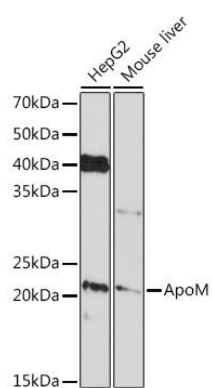
Immunogen:

A synthesized peptide derived from human ApoM

Storage:

Store at -20°C. Avoid freeze / thaw cycles. Buffer: PBS with 0.02% sodium azide, 0.05% BSA, 50% glycerol, pH7.3.

Product Images



Western blot - ApoM Rabbit mAb (CAB5144)