

# Rad23A Rabbit Monoclonal Antibody



CAB5147

## Product Information

### Size:

20uL, 50uL, 100uL, 200uL

### Observed MW:

50KDa

### Calculated MW:

55kDa

### Applications:

WB IF

### Reactivity:

Human, Mouse, Rat

## Antibody Information

### Recommended dilutions:

WB 1:500 - 1:2000 IF 1:50 - 1:200

### Source:

Rabbit

### Isotype:

IgG

### Purification:

Affinity purification

## Protein Background

The protein encoded by this gene is one of two human homologs of *Saccharomyces cerevisiae* Rad23, a protein involved in nucleotide excision repair. Proteins in this family have a modular domain structure consisting of an ubiquitin-like domain (Ubl), ubiquitin-associated domain 1 (Uba1), XPC-binding domain and Uba2. The protein encoded by this gene plays an important role in nucleotide excision repair and also in delivery of polyubiquitinated proteins to the proteasome. Alternative splicing results in multiple transcript variants encoding multiple isoforms. [provided by RefSeq, Jun 2012]

## Immunogen information

### Gene ID:

5886

### Uniprot

P54725

### Synonyms:

HHR23A; HR23A

### Immunogen:

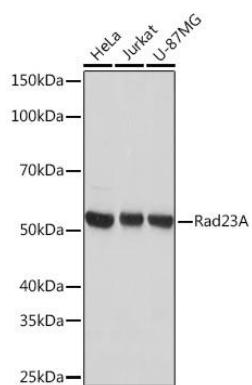
A synthesized peptide derived from human Rad23A

### Storage:

Store at -20°C. Avoid freeze / thaw cycles. Buffer: PBS with 0.02% sodium azide, 0.05% BSA, 50% glycerol, pH7.3.

## Product Images

---



Western blot - Rad23A Rabbit mAb (CAB5147)