

UBE2F Rabbit Polyclonal Antibody



CAB5160

Product Information

Size:

20uL, 50uL, 100uL, 200uL

Observed MW:

21kDa

Calculated MW:

11kDa/13kDa/17kDa/18kDa/
21kDa/23kDa

Applications:

WB IHC IF

Reactivity:

Human, Mouse, Rat

Antibody Information

Recommended dilutions:

WB 1:500 - 1:2000 IHC 1:50
- 1:200 IF 1:50 - 1:200

Source:

Rabbit

Isotype:

IgG

Purification:

Affinity purification

Protein Background

Immunogen information

Gene ID:

140739

Uniprot

Q969M7

Synonyms:

UBE2F; NCE2

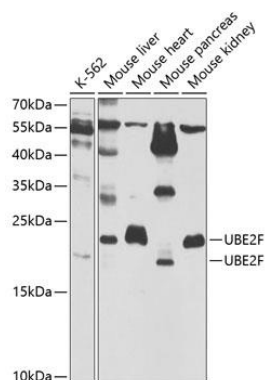
Immunogen:

Recombinant fusion protein containing a sequence corresponding to amino acids 1-185 of human UBE2F (NP_542409.1).

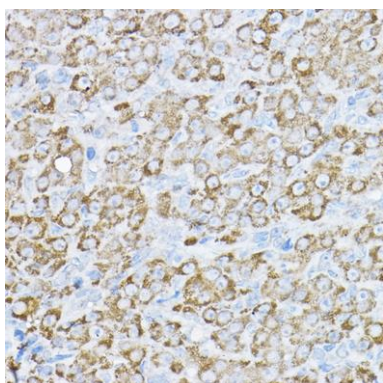
Storage:

Store at -20°C. Avoid freeze / thaw cycles. Buffer: PBS with 0.02% sodium azide, 50% glycerol, pH7.3.

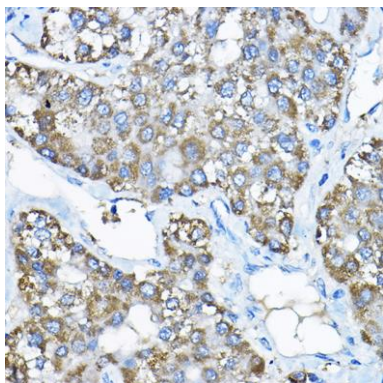
Product Images



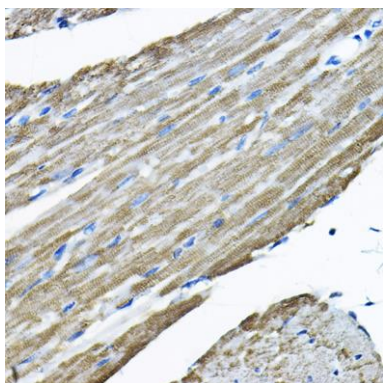
Western blot analysis of extracts of various cell lines, using UBE2F antibody (CAB5160) at 1:1000 dilution. Secondary antibody: HRP Goat Anti-Rabbit IgG (H+L) (CABS014) at 1:10000 dilution. Lysates/proteins: 25ug per lane. Blocking buffer: 3% nonfat dry milk in TBST. Detection: ECL Basic Kit (CABM00020). Exposure time: 90s.



Immunohistochemistry of paraffin-embedded rat ovary using UBE2F Rabbit pAb (CAB5160) at dilution of 1:200 (40x lens).



Immunohistochemistry of paraffin-embedded human liver cancer using UBE2F Rabbit pAb (CAB5160) at dilution of 1:200 (40x lens).



Immunohistochemistry of paraffin-embedded mouse heart using UBE2F Rabbit pAb (CAB5160) at dilution of 1:200 (40x lens).