

# TIP49A Rabbit Monoclonal Antibody



CAB5180

## Product Information

### Size:

20uL, 50uL, 100uL, 200uL

### Observed MW:

51KDa

### Calculated MW:

50kDa

### Applications:

WB IHC

### Reactivity:

Human, Mouse, Rat

## Antibody Information

### Recommended dilutions:

WB 1:500 - 1:2000 IHC 1:50  
- 1:200

### Source:

Rabbit

### Isotype:

IgG

### Purification:

Affinity purification

## Protein Background

This gene encodes a protein that has both DNA-dependent ATPase and DNA helicase activities and belongs to the ATPases associated with diverse cellular activities (AAA+) protein family. The encoded protein associates with several multisubunit transcriptional complexes and with protein complexes involved in both ATP-dependent remodeling and histone modification. Alternate splicing results in multiple transcript variants. [provided by RefSeq, Jan 2016]

## Immunogen information

### Gene ID:

8607

### Uniprot

Q9Y265

### Synonyms:

ECP-54; ECP54; INO80H; NMP 238; NMP238; PONTIN; Pontin52;  
RVB1; TIH1; TIP49; TIP49A

### Immunogen:

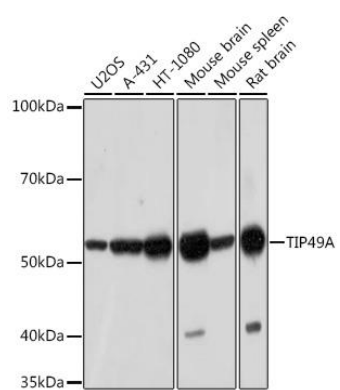
A synthesized peptide derived from human TIP49A

### Storage:

Store at -20°C. Avoid freeze / thaw cycles. Buffer: PBS with 0.02% sodium azide, 0.05% BSA, 50% glycerol, pH7.3.

## Product Images

---



Western blot - TIP49A Rabbit mAb (CAB5180)