

IMP2 Rabbit Monoclonal Antibody



CAB5189

Product Information

Size:

20uL, 50uL, 100uL, 200uL

Observed MW:

65KDa/70KDa

Calculated MW:

66, 62kDa

Applications:

WB IHC

Reactivity:

Human

Protein Background

This gene encodes a protein that binds the 5' UTR of insulin-like growth factor 2 (IGF2) mRNA and regulates its translation. It plays an important role in metabolism and variation in this gene is associated with susceptibility to diabetes. Alternative splicing and promoter usage results in multiple transcript variants. Related pseudogenes are found on several chromosomes. [provided by RefSeq, Sep 2016]

Immunogen information

Gene ID:

10644

Uniprot

Q9Y6M1

Synonyms:

IMP-2; IMP2; VICKZ2

Antibody Information

Recommended dilutions:

WB 1:500 - 1:2000 IHC 1:50
- 1:200

Source:

Rabbit

Isotype:

IgG

Purification:

Affinity purification

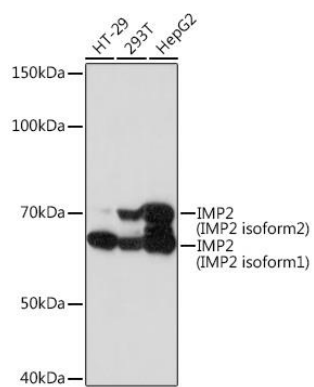
Immunogen:

A synthesized peptide derived from human IMP2

Storage:

Store at -20°C. Avoid freeze / thaw cycles. Buffer: PBS with 0.02% sodium azide, 0.05% BSA, 50% glycerol, pH7.3.

Product Images



Western blot - IMP2 Rabbit mAb (CAB5189)