

KIFAP3 Rabbit Monoclonal Antibody



CAB5216

Product Information

Size:

20uL, 50uL, 100uL, 200uL

Observed MW:

100KDa

Calculated MW:

91-100kDa

Applications:

WB IF

Reactivity:

Human, Mouse, Rat

Antibody Information

Recommended dilutions:

WB 1:500 - 1:2000 IF 1:50 - 1:200

Source:

Rabbit

Isotype:

IgG

Purification:

Affinity purification

Protein Background

The small G protein GDP dissociation stimulator (smg GDS) is a regulator protein having two activities on a group of small G proteins including the Rho and Rap1 family members and Ki-Ras; one is to stimulate their GDP/GTP exchange reactions, and the other is to inhibit their interactions with membranes. The protein encoded by this gene contains 9 'Armadillo' repeats and interacts with the smg GDS protein through these repeats. This protein, which is highly concentrated around the endoplasmic reticulum, is phosphorylated by v-src, and this phosphorylation reduces the affinity of the protein for smg GDS. It is thought that this protein serves as a linker between human chromosome-associated polypeptide (HCAP) and KIF3A/B, a kinesin superfamily protein in the nucleus, and that it plays a role in the interaction of chromosomes with an ATPase motor protein. Several transcript variants encoding different isoforms have been found for this gene. [provided by RefSeq, Mar 2011]

Immunogen information

Gene ID:

22920

Uniprot

Q92845

Synonyms:

FLA3; KAP-1; KAP-3; KAP3; SMAP; Smg-GDS; dJ190116.1

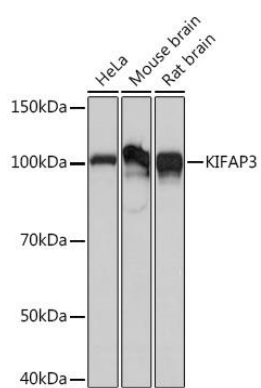
Immunogen:

A synthesized peptide derived from human KIFAP3

Storage:

Store at -20°C. Avoid freeze / thaw cycles. Buffer: PBS with 0.02% sodium azide, 0.05% BSA, 50% glycerol, pH7.3.

Product Images



Western blot - KIFAP3 Rabbit mAb (CAB5216)