

# SNX19 Rabbit Polyclonal Antibody



CAB5229

---

## Product Information

### Size:

20uL, 50uL, 100uL, 200uL

### Observed MW:

108kDa

### Calculated MW:

87kDa/108kDa

### Applications:

WB

### Reactivity:

Human, Mouse, Rat

## Protein Background

Islet antigen-2 (IA-2) is an autoantigen in type 1 diabetes and plays a role in insulin secretion. IA-2 is found in dense-core secretory vesicles and interacts with the product of this gene, a sorting nexin. In mouse pancreatic beta-cells, the encoded protein influenced insulin secretion by stabilizing the number of dense-core secretory vesicles.

## Immunogen information

### Gene ID:

399979

### Uniprot

Q92543

### Synonyms:

SNX19; CHET8

## Antibody Information

### Recommended dilutions:

WB 1:500 - 1:2000

### Source:

Rabbit

### Isotype:

IgG

### Purification:

Affinity purification

### Immunogen:

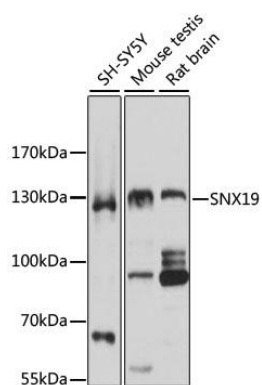
Recombinant fusion protein containing a sequence corresponding to amino acids 550-750 of human SNX19 (NP\_055573.2).

### Storage:

Store at -20°C. Avoid freeze / thaw cycles. Buffer: PBS with 0.02% sodium azide, 50% glycerol, pH7.3.

## Product Images

---



Western blot analysis of extracts of various cell lines, using SNX19 antibody (CAB5229) at 1:3000 dilution. Secondary antibody: HRP Goat Anti-Rabbit IgG (H+L) (CABS014) at 1:10000 dilution. Lysates/proteins: 25ug per lane. Blocking buffer: 3% nonfat dry milk in TBST. Detection: ECL Basic Kit (CABM00020). Exposure time: 30s.