

# GTF2H2C Rabbit Polyclonal Antibody



CAB5239

---

## Product Information

### Size:

20uL, 50uL, 100uL, 200uL

### Observed MW:

44kDa

### Calculated MW:

44kDa

### Applications:

WB IHC IF

### Reactivity:

Human, Rat

## Antibody Information

### Recommended dilutions:

WB 1:200 - 1:2000 IHC 1:50  
- 1:200 IF 1:50 - 1:200

### Source:

Rabbit

### Isotype:

IgG

### Purification:

Affinity purification

## Protein Background

### Immunogen information

#### Gene ID:

728340

#### Uniprot

Q6P1K8

#### Synonyms:

GTF2H2C; GTF2H2C\_2

#### Immunogen:

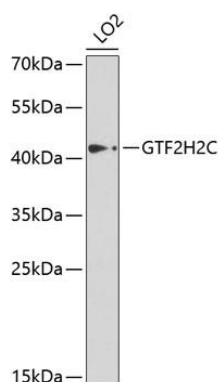
Recombinant fusion protein containing a sequence corresponding to amino acids 1-300 of human GTF2H2C (NP\_001092198.1).

#### Storage:

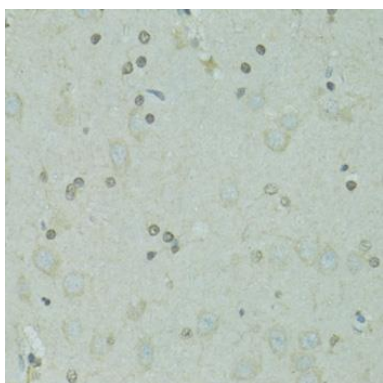
Store at -20°C. Avoid freeze / thaw cycles. Buffer: PBS with 0.02% sodium azide, 50% glycerol, pH7.3.

## Product Images

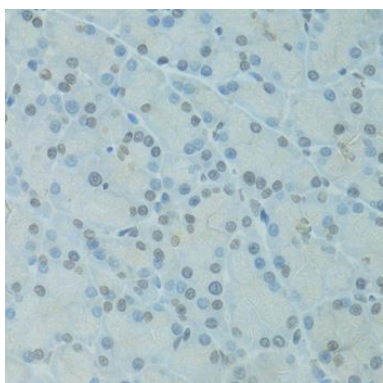
---



Western blot analysis of extracts of LO2 cells, using GTF2H2C antibody (CAB5239) at 1:1000 dilution. Secondary antibody: HRP Goat Anti-Rabbit IgG (H+L) (CABS014) at 1:10000 dilution. Lysates/proteins: 25ug per lane. Blocking buffer: 3% nonfat dry milk in TBST. Detection: ECL Enhanced Kit (CABM00021). Exposure time: 5s.



Immunohistochemistry of paraffin-embedded rat brain using GTF2H2C antibody (CAB5239) at dilution of 1:100 (40x lens).



Immunohistochemistry of paraffin-embedded rat pancreas using GTF2H2C antibody (CAB5239) at dilution of 1:100 (40x lens).