

Snail Rabbit Polyclonal Antibody



CAB5243

Product Information

Size:

20uL, 50uL, 100uL, 200uL

Observed MW:

29kDa

Calculated MW:

29kDa

Applications:

WB IHC IF

Reactivity:

Human, Mouse, Rat

Protein Background

The Drosophila embryonic protein snail is a zinc finger transcriptional repressor which downregulates the expression of ectodermal genes within the mesoderm. The nuclear protein encoded by this gene is structurally similar to the Drosophila snail protein, and is also thought to be critical for mesoderm formation in the developing embryo. At least two variants of a similar processed pseudogene have been found on chromosome 2.

Immunogen information

Gene ID:

6615

Uniprot

O95863

Synonyms:

SNAIL1; SLUGH2; SNA; SNAH; SNAIL; SNAIL1; dJ710H13.1

Antibody Information

Recommended dilutions:

WB 1:500 - 1:2000 IHC 1:50
- 1:100 IF 1:50 - 1:200

Source:

Rabbit

Isotype:

IgG

Purification:

Affinity purification

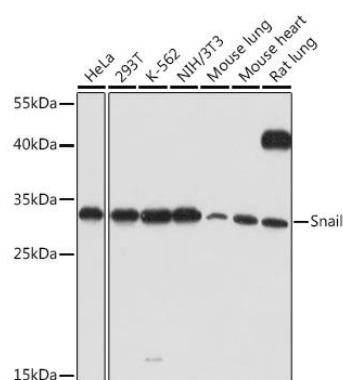
Immunogen:

A synthetic peptide corresponding to a sequence within amino acids 1-100 of human Snail (NP_005976.2).

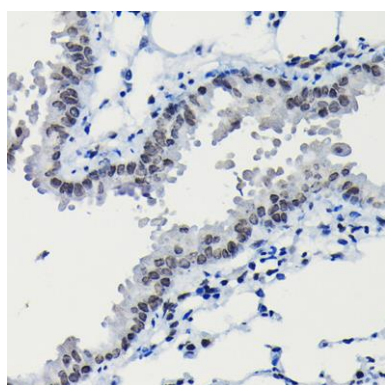
Storage:

Store at -20°C. Avoid freeze / thaw cycles. Buffer: PBS with 0.02% sodium azide, 50% glycerol, pH7.3.

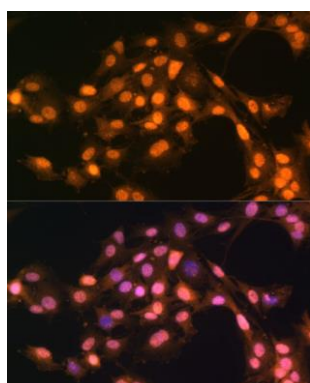
Product Images



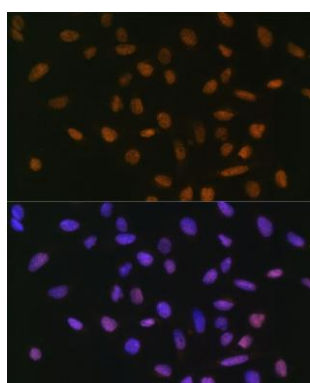
Western blot analysis of extracts of various cell lines, using Snail antibody (CAB5243) at 1:1000 dilution. Secondary antibody: HRP Goat Anti-Rabbit IgG (H+L) (CABS014) at 1:10000 dilution. Lysates/proteins: 25ug per lane. Blocking buffer: 3% nonfat dry milk in TBST. Detection: ECL Basic Kit (CABM00020). Exposure time: 30s.



Immunohistochemistry of paraffin-embedded mouse lung using Snail Rabbit pAb (CAB5243) at dilution of 1:200 (40x lens).



Immunofluorescence analysis of C6 cells using Snail antibody (CAB5243) at dilution of 1:100. Blue: DAPI for nuclear staining.



Immunofluorescence analysis of U-2 OS cells using Snail antibody (CAB5243) at dilution of 1:100. Blue: DAPI for nuclear staining.