

RRM2 Rabbit Polyclonal Antibody



CAB5255

Product Information

Size:

20uL, 50uL, 100uL, 200uL

Observed MW:

45kDa

Calculated MW:

44kDa/51kDa

Applications:

WB IHC IF IP

Reactivity:

Human, Mouse, Rat

Protein Background

This gene encodes one of two non-identical subunits for ribonucleotide reductase. This reductase catalyzes the formation of deoxyribonucleotides from ribonucleotides. Synthesis of the encoded protein (M2) is regulated in a cell-cycle dependent fashion. Transcription from this gene can initiate from alternative promoters, which results in two isoforms that differ in the lengths of their N-termini. Related pseudogenes have been identified on chromosomes 1 and X.

Immunogen information

Gene ID:

6241

Uniprot

P31350

Synonyms:

RRM2; R2; RR2; RR2M

Antibody Information

Recommended dilutions:

WB 1:500 - 1:2000 IHC 1:50
- 1:100 IF 1:10 - 1:100 IP
1:50 - 1:200

Source:

Rabbit

Isotype:

IgG

Purification:

Affinity purification

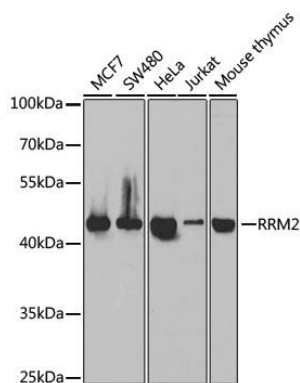
Immunogen:

Recombinant fusion protein containing a sequence corresponding to amino acids 1-389 of human RRM2 (NP_001025.1).

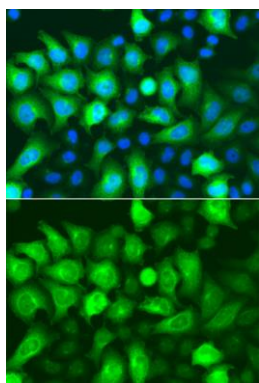
Storage:

Store at -20°C. Avoid freeze / thaw cycles. Buffer: PBS with 0.02% sodium azide, 50% glycerol, pH7.3.

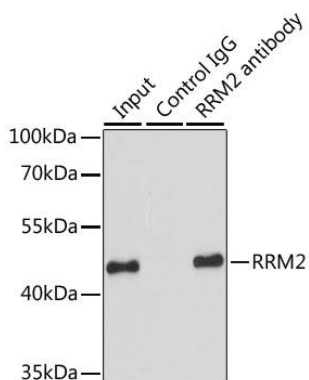
Product Images



Western blot analysis of extracts of various cell lines, using RRM2 antibody (CAB5255) at 1:1000 dilution. Secondary antibody: HRP Goat Anti-Rabbit IgG (H+L) (CABS014) at 1:10000 dilution. Lysates/proteins: 25ug per lane. Blocking buffer: 3% nonfat dry milk in TBST.



Immunofluorescence analysis of A549 cells using RRM2 antibody (CAB5255). Blue: DAPI for nuclear staining.



Immunoprecipitation analysis of 200ug extracts of HeLa cells using 1ug RRM2 antibody (CAB5255). Western blot was performed from the immunoprecipitate using RRM2 antibody (CAB5255) at a dilution of 1:1000.