

NRF1 Mouse Monoclonal Antibody



CAB5264

Product Information

Size:

50uL, 100uL, 200uL

Observed MW:

70kDa

Calculated MW:

36kDa/46kDa/53kDa/55kDa

Applications:

WB

Reactivity:

Human

Antibody Information

Recommended dilutions:

WB 1:500 - 1:2000

Source:

Mouse

Isotype:

IgG

Purification:

Affinity purification

Protein Background

This gene encodes a protein that homodimerizes and functions as a transcription factor which activates the expression of some key metabolic genes regulating cellular growth and nuclear genes required for respiration, heme biosynthesis, and mitochondrial DNA transcription and replication. The protein has also been associated with the regulation of neurite outgrowth. Alternative splicing results in multiple transcript variants. Confusion has occurred in bibliographic databases due to the shared symbol of NRF1 for this gene and for 'nuclear factor (erythroid-derived 2)-like 1' which has an official symbol of NFE2L1.

Immunogen information

Gene ID:

4899

Uniprot

Q16656

Synonyms:

NRF1; ALPHA-PAL

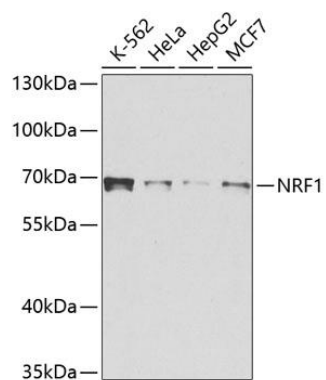
Immunogen:

Recombinant protein of human NRF1

Storage:

Store at -20°C. Avoid freeze / thaw cycles. Buffer: PBS with 0.02% sodium azide, 50% glycerol, pH7.3.

Product Images



Western blot analysis of extracts of various cell lines, using NRF1 antibody (CAB5264) at 1:1000 dilution. Secondary antibody: HRP Goat Anti-Mouse IgG (H+L) (CABS003) at 1:10000 dilution. Lysates/proteins: 25ug per lane. Blocking buffer: 3% nonfat dry milk in TBST. Detection: ECL Basic Kit (CABM00020). Exposure time: 15s.