

# WWP1 Rabbit Polyclonal Antibody



CAB5269

## Product Information

### Size:

20uL, 50uL, 100uL, 200uL

### Observed MW:

95kDa

### Calculated MW:

13kDa/81kDa/91kDa/105kDa

### Applications:

WB

### Reactivity:

Human, Mouse

## Antibody Information

### Recommended dilutions:

WB 1:500 - 1:2000

### Source:

Rabbit

### Isotype:

IgG

### Purification:

Affinity purification

## Protein Background

WW domain-containing proteins are found in all eukaryotes and play an important role in the regulation of a wide variety of cellular functions such as protein degradation, transcription, and RNA splicing. This gene encodes a protein which contains 4 tandem WW domains and a HECT (homologous to the E6-associated protein carboxyl terminus) domain. The encoded protein belongs to a family of NEDD4-like proteins, which are E3 ubiquitin-ligase molecules and regulate key trafficking decisions, including targeting of proteins to proteosomes or lysosomes. Alternative splicing of this gene generates at least 6 transcript variants; however, the full length nature of these transcripts has not been defined.

## Immunogen information

### Gene ID:

11059

### Uniprot

Q9H0M0

### Synonyms:

WWP1; AIP5; Tiul1; hSDRP1

### Immunogen:

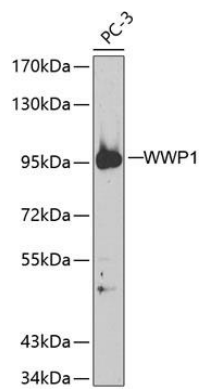
Recombinant fusion protein containing a sequence corresponding to amino acids 1-260 of human WWP1 (NP\_008944.1).

### Storage:

Store at -20°C. Avoid freeze / thaw cycles. Buffer: PBS with 0.02% sodium azide, 50% glycerol, pH7.3.

## Product Images

---



Western blot analysis of extracts of PC-3 cells, using WWP1 antibody (CAB5269). Secondary antibody: HRP Goat Anti-Rabbit IgG (H+L) (CABS014) at 1:10000 dilution. Lysates/proteins: 25ug per lane. Blocking buffer: 3% nonfat dry milk in TBST.