

CHRNB1 Rabbit Polyclonal Antibody



CAB5295

Product Information

Size:

20uL, 50uL, 100uL, 200uL

Observed MW:

63kDa

Calculated MW:

49kDa/56kDa

Applications:

WB

Reactivity:

Human, Mouse

Protein Background

The muscle acetylcholine receptor is composed of five subunits: two alpha subunits and one beta, one gamma, and one delta subunit. This gene encodes the beta subunit of the acetylcholine receptor. The acetylcholine receptor changes conformation upon acetylcholine binding leading to the opening of an ion-conducting channel across the plasma membrane. Mutations in this gene are associated with slow-channel congenital myasthenic syndrome.

Immunogen information

Gene ID:

1140

Uniprot

P11230

Synonyms:

CHRNB1; ACHRB; CHRNB; CMS1D; CMS2A; CMS2C; SCCMS

Antibody Information

Recommended dilutions:

WB 1:500 - 1:2000

Source:

Rabbit

Isotype:

IgG

Purification:

Affinity purification

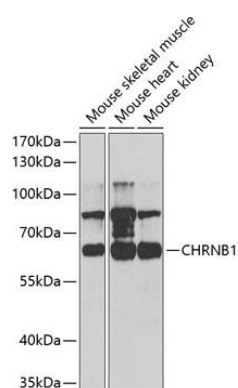
Immunogen:

Recombinant fusion protein containing a sequence corresponding to amino acids 25-235 of human CHRNB1 (NP_000738.2).

Storage:

Store at -20°C. Avoid freeze / thaw cycles. Buffer: PBS with 0.02% sodium azide, 50% glycerol, pH7.3.

Product Images



Western blot analysis of extracts of various cell lines, using CHRNB1 antibody (CAB5295) at 1:1000 dilution. Secondary antibody: HRP Goat Anti-Rabbit IgG (H+L) (CABS014) at 1:10000 dilution. Lysates/proteins: 25ug per lane. Blocking buffer: 3% nonfat dry milk in TBST. Detection: ECL Basic Kit (CABM00020). Exposure time: 90s.