

AIMP1 Rabbit Polyclonal Antibody



CAB5301

Product Information

Size:

20uL, 50uL, 100uL, 200uL

Observed MW:

37kDa

Calculated MW:

34kDa/37kDa

Applications:

WB IHC IF

Reactivity:

Human, Mouse, Rat

Antibody Information

Recommended dilutions:

WB 1:500 - 1:2000 IHC 1:50
- 1:200 IF 1:50 - 1:200

Source:

Rabbit

Isotype:

IgG

Purification:

Affinity purification

Protein Background

The protein encoded by this gene is a cytokine that is specifically induced by apoptosis, and it is involved in the control of angiogenesis, inflammation, and wound healing. The release of this cytokine renders the tumor-associated vasculature sensitive to tumor necrosis factor. The precursor protein is identical to the p43 subunit, which is associated with the multi-tRNA synthetase complex, and it modulates aminoacylation activity of tRNA synthetase in normal cells. This protein is also involved in the stimulation of inflammatory responses after proteolytic cleavage in tumor cells. Multiple transcript variants encoding different isoforms have been found for this gene. A pseudogene has been identified on chromosome 20.

Immunogen information

Gene ID:

9255

Uniprot

Q12904

Synonyms:

AIMP1; EMAP2; EMAPII; HLD3; SCYE1; p43

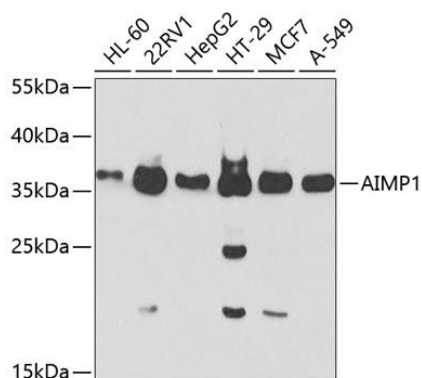
Immunogen:

Recombinant fusion protein containing a sequence corresponding to amino acids 25-180 of human AIMP1 (NP_001135888.1).

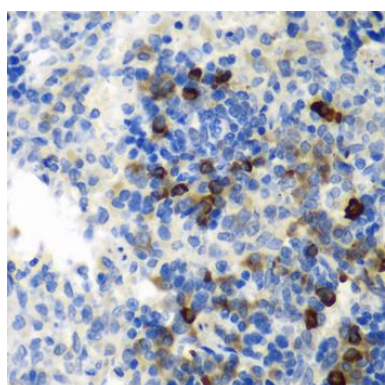
Storage:

Store at -20°C. Avoid freeze / thaw cycles. Buffer: PBS with 0.02% sodium azide, 50% glycerol, pH7.3.

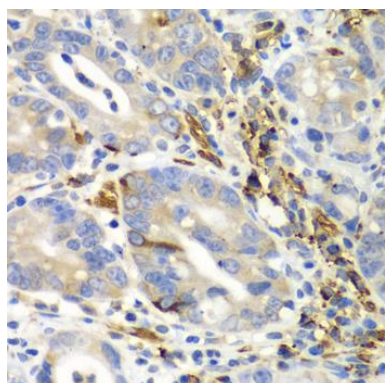
Product Images



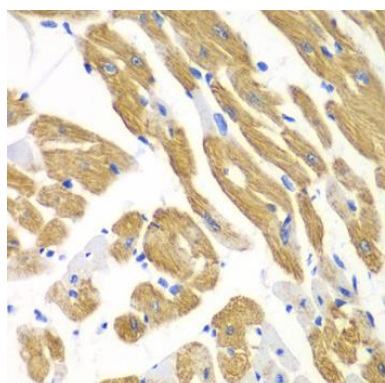
Western blot analysis of extracts of various cell lines, using AIMP1 Antibody (CAB5301) at 1:1000 dilution. Secondary antibody: HRP Goat Anti-Rabbit IgG (H+L) (CABS014) at 1:10000 dilution. Lysates/proteins: 25ug per lane. Blocking buffer: 3% nonfat dry milk in TBST. Detection: ECL Basic Kit (CABM00020). Exposure time: 30s.



Immunohistochemistry of paraffin-embedded rat spleen using AIMP1 antibody (CAB5301) at dilution of 1:100 (40x lens).



Immunohistochemistry of paraffin-embedded human gastric cancer using AIMP1 antibody (CAB5301) at dilution of 1:100 (40x lens).



Immunohistochemistry of paraffin-embedded mouse heart using AIMP1 antibody (CAB5301) at dilution of 1:100 (40x lens).