

ATL1 Rabbit Polyclonal Antibody



CAB5302

Product Information

Size:

20uL, 50uL, 100uL, 200uL

Observed MW:

64kDa

Calculated MW:

63kDa

Applications:

WB IF

Reactivity:

Human, Mouse

Protein Background

The protein encoded by this gene is a GTPase and a Golgi body transmembrane protein. The encoded protein can form a homotetramer and has been shown to interact with spastin and with mitogen-activated protein kinase kinase kinase 4. This protein may be involved in axonal maintenance as evidenced by the fact that defects in this gene are a cause of spastic paraplegia type 3. Three transcript variants encoding two different isoforms have been found for this gene.

Immunogen information

Gene ID:

51062

Uniprot

Q8WXF7

Synonyms:

ATL1; AD-FSP; FSP1; GBP3; HSN1D; SPG3; SPG3A; atlastin1

Antibody Information

Recommended dilutions:

WB 1:500 - 1:2000 IF 1:50 - 1:200

Source:

Rabbit

Isotype:

IgG

Purification:

Affinity purification

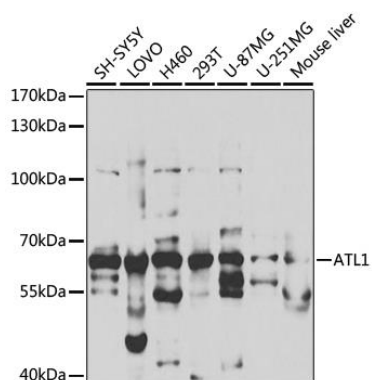
Immunogen:

Recombinant fusion protein containing a sequence corresponding to amino acids 1-280 of human ATL1 (NP_056999.2).

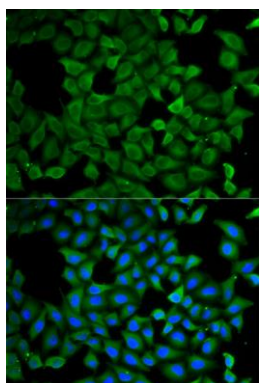
Storage:

Store at -20°C. Avoid freeze / thaw cycles. Buffer: PBS with 0.02% sodium azide, 50% glycerol, pH7.3.

Product Images



Western blot analysis of extracts of various cell lines, using ATL1 antibody (CAB5302) at 1:1000 dilution. Secondary antibody: HRP Goat Anti-Rabbit IgG (H+L) (CABS014) at 1:10000 dilution. Lysates/proteins: 25ug per lane. Blocking buffer: 3% nonfat dry milk in TBST. Detection: ECL Basic Kit (CABM00020). Exposure time: 180s.



Immunofluorescence analysis of A549 cells using ATL1 antibody (CAB5302). Blue: DAPI for nuclear staining.