

CPT1A Rabbit Polyclonal Antibody



CAB5307

Product Information

Size:

20uL, 50uL, 100uL, 200uL

Observed MW:

88kDa

Calculated MW:

86kDa/88kDa

Applications:

WB IHC IP

Reactivity:

Human, Mouse, Rat

Antibody Information

Recommended dilutions:

WB 1:500 - 1:2000 IHC 1:50
- 1:100 IP 1:50 - 1:100

Source:

Rabbit

Isotype:

IgG

Purification:

Affinity purification

Protein Background

The mitochondrial oxidation of long-chain fatty acids is initiated by the sequential action of carnitine palmitoyltransferase I (which is located in the outer membrane and is detergent-labile) and carnitine palmitoyltransferase II (which is located in the inner membrane and is detergent-stable), together with a carnitine-acylcarnitine translocase. CPT I is the key enzyme in the carnitine-dependent transport across the mitochondrial inner membrane and its deficiency results in a decreased rate of fatty acid beta-oxidation. Alternatively spliced transcript variants encoding different isoforms have been found for this gene.

Immunogen information

Gene ID:

1374

Uniprot

P50416

Synonyms:

CPT1A; CPT1; CPT1-L; L-CPT1

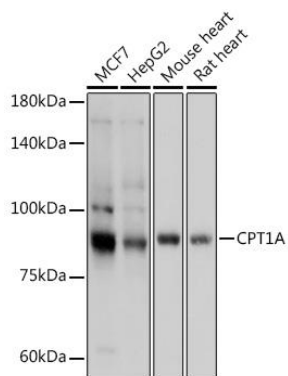
Immunogen:

Recombinant fusion protein containing a sequence corresponding to amino acids 497-756 of human CPT1A (NP_001027017.1).

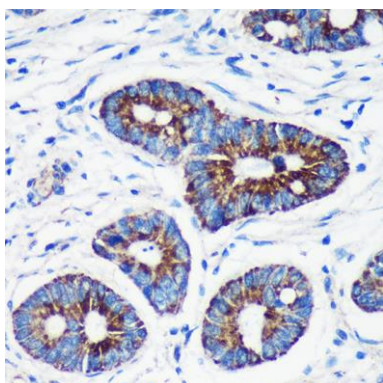
Storage:

Store at -20°C. Avoid freeze / thaw cycles. Buffer: PBS with 0.02% sodium azide, 50% glycerol, pH7.3.

Product Images



Western blot analysis of extracts of various cell lines, using CPT1A antibody (CAB5307) at 1:1000 dilution. Secondary antibody: HRP Goat Anti-Rabbit IgG (H+L) (CABS014) at 1:10000 dilution. Lysates/proteins: 25ug per lane. Blocking buffer: 3% nonfat dry milk in TBST. Detection: ECL Basic Kit (CABM00020). Exposure time: 1s.



Immunohistochemistry of paraffin-embedded Human colon carcinoma using CPT1A Rabbit pAb (CAB5307) at dilution of 1:100 (40x lens).