

GTF2H2 Rabbit Polyclonal Antibody



CAB5317

Product Information

Size:

20uL, 50uL, 100uL, 200uL

Observed MW:

44kDa

Calculated MW:

44kDa

Applications:

WB IHC

Reactivity:

Mouse, Rat

Antibody Information

Recommended dilutions:

WB 1:500 - 1:2000 IHC 1:50
- 1:200

Source:

Rabbit

Isotype:

IgG

Purification:

Affinity purification

Protein Background

This gene is part of a 500 kb inverted duplication on chromosome 5q13. This duplicated region contains at least four genes and repetitive elements which make it prone to rearrangements and deletions. The repetitiveness and complexity of the sequence have also caused difficulty in determining the organization of this genomic region. This gene is within the telomeric copy of the duplication. Deletion of this gene sometimes accompanies deletion of the neighboring SMN1 gene in spinal muscular atrophy (SMA) patients but it is unclear if deletion of this gene contributes to the SMA phenotype. This gene encodes the 44 kDa subunit of RNA polymerase II transcription initiation factor IIH which is involved in basal transcription and nucleotide excision repair. Transcript variants for this gene have been described, but their full length nature has not been determined. A second copy of this gene within the centromeric copy of the duplication has been described in the literature. It is reported to be different by either two or four base pairs; however, no sequence data is currently available for the centromeric copy of the gene.

Immunogen information

Gene ID:

2966

Uniprot

Q13888

Synonyms:

GTF2H2; BTF2; BTF2P44; T-BTF2P44; TFIIH; p44

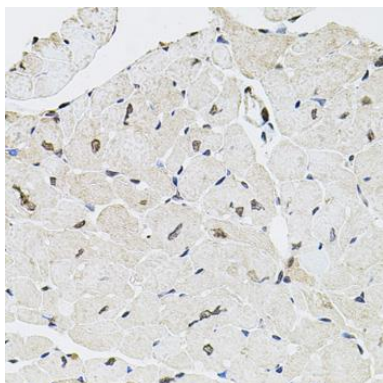
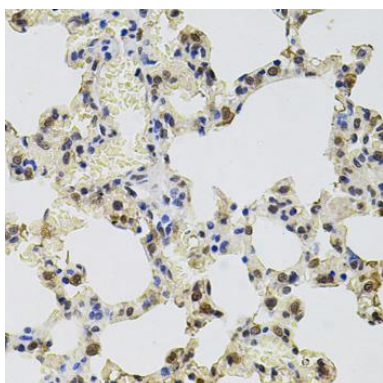
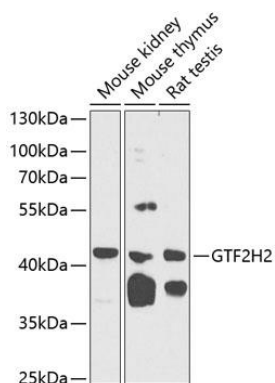
Immunogen:

A synthetic peptide corresponding to a sequence within amino acids 1-100 of human GTF2H2 (NP_001506.1).

Storage:

Store at -20°C. Avoid freeze / thaw cycles. Buffer: PBS with 0.02% sodium azide, 50% glycerol, pH7.3.

Product Images



Western blot analysis of extracts of various cell lines, using GTF2H2 Antibody (CAB5317) at 1:1000 dilution. Secondary antibody: HRP Goat Anti-Rabbit IgG (H+L) (CABS014) at 1:10000 dilution. Lysates/proteins: 25ug per lane. Blocking buffer: 3% nonfat dry milk in TBST. Detection: ECL Basic Kit (CABM00020). Exposure time: 60s.

Immunohistochemistry of paraffin-embedded rat lung using GTF2H2 antibody (CAB5317) at dilution of 1:100 (40x lens).

Immunohistochemistry of paraffin-embedded mouse heart using GTF2H2 antibody (CAB5317) at dilution of 1:100 (40x lens).