

# NOV Rabbit Polyclonal Antibody



CAB5320

## Product Information

### Size:

20uL, 50uL, 100uL, 200uL

### Observed MW:

### Calculated MW:

39kDa

### Applications:

IHC

### Reactivity:

Human

## Protein Background

The protein encoded by this gene is a small secreted cysteine-rich protein and a member of the CCN family of regulatory proteins. CCN family proteins associate with the extracellular matrix and play an important role in cardiovascular and skeletal development, fibrosis and cancer development.

## Immunogen information

### Gene ID:

4856

### Uniprot

P48745

### Synonyms:

NOV; CCN3; IBP-9; IGFBP-9; IGFBP9; NOVh

## Antibody Information

### Recommended dilutions:

IHC 1:50 - 1:100

### Source:

Rabbit

### Isotype:

IgG

### Purification:

Affinity purification

### Immunogen:

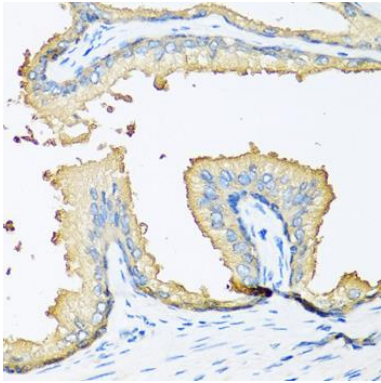
Recombinant fusion protein containing a sequence corresponding to amino acids 32-357 of human NOV (NP\_002505.1).

### Storage:

Store at -20°C. Avoid freeze / thaw cycles. Buffer: PBS with 0.02% sodium azide, 50% glycerol, pH7.3.

## Product Images

---



Immunohistochemistry of paraffin-embedded human prostate using NOV antibody (CAB5320) at dilution of 1:100 (40x lens).