

POLD1 Rabbit Polyclonal Antibody



CAB5323

Product Information

Size:

20uL, 50uL, 100uL, 200uL

Observed MW:

130kDa

Calculated MW:

123kDa

Applications:

WB IHC IF

Reactivity:

Human, Mouse

Protein Background

This gene encodes the 125-kDa catalytic subunit of DNA polymerase delta. DNA polymerase delta possesses both polymerase and 3' to 5' exonuclease activity and plays a critical role in DNA replication and repair. Alternatively spliced transcript variants have been observed for this gene, and a pseudogene of this gene is located on the long arm of chromosome 6.

Immunogen information

Gene ID:

5424

Uniprot

P28340

Synonyms:

POLD1; CDC2; CRCS10; MDPL; POLD

Antibody Information

Recommended dilutions:

WB 1:500 - 1:2000 IHC 1:50
- 1:200 IF 1:50 - 1:200

Source:

Rabbit

Isotype:

IgG

Purification:

Affinity purification

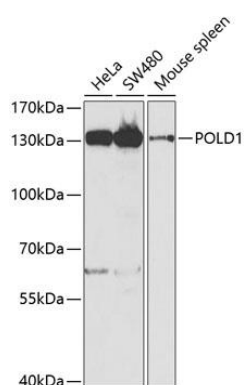
Immunogen:

Recombinant fusion protein containing a sequence corresponding to amino acids 808-1107 of human POLD1 (NP_002682.2).

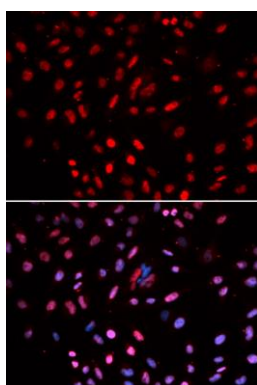
Storage:

Store at -20°C. Avoid freeze / thaw cycles. Buffer: PBS with 0.02% sodium azide, 50% glycerol, pH7.3.

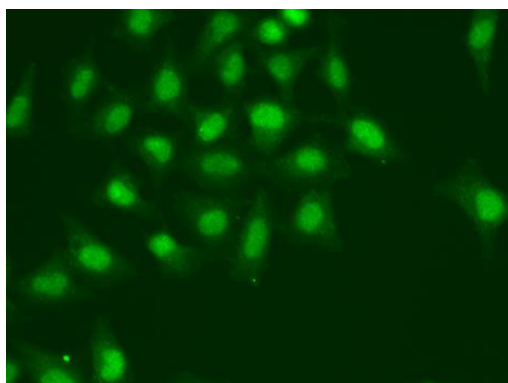
Product Images



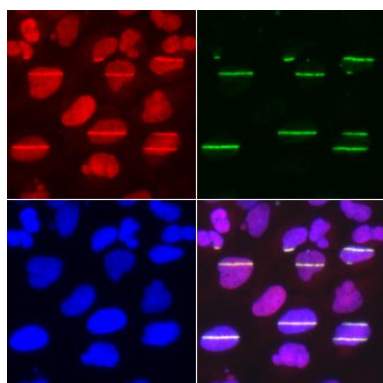
Western blot analysis of extracts of various cell lines, using POLD1 antibody (CAB5323) at 1:1000 dilution. Secondary antibody: HRP Goat Anti-Rabbit IgG (H+L) (CABS014) at 1:10000 dilution. Lysates/proteins: 25ug per lane. Blocking buffer: 3% nonfat dry milk in TBST. Detection: ECL Basic Kit (CABM00020). Exposure time: 90s.



Immunofluorescence analysis of U2OS cells using POLD1 antibody (CAB5323). Blue: DAPI for nuclear staining.



Immunofluorescence analysis of A549 cells using POLD1 antibody (CAB5323).



Immunofluorescence analysis of U2OS cells using POLD1 antibody (CAB5323). Green-gamma H2AX (phospho S139) used for DNA damage marker. Blue: DAPI for nuclear staining. Cells were treated by UV-A laser.