

# APOM Rabbit Polyclonal Antibody



CAB5336

---

## Product Information

### Size:

20uL, 50uL, 100uL, 200uL

### Observed MW:

25kDa

### Calculated MW:

13kDa/21kDa

### Applications:

WB IHC IF

### Reactivity:

Human, Mouse, Rat

## Protein Background

The protein encoded by this gene is an apolipoprotein and member of the lipocalin protein family. It is found associated with high density lipoproteins and to a lesser extent with low density lipoproteins and triglyceride-rich lipoproteins. The encoded protein is secreted through the plasma membrane but remains membrane-bound, where it is involved in lipid transport. Alternate splicing results in both coding and non-coding variants of this gene.

## Immunogen information

### Gene ID:

55937

### Uniprot

O95445

### Synonyms:

APOM; G3a; HSPC336; NG20; apo-M

## Antibody Information

### Recommended dilutions:

WB 1:500 - 1:2000 IHC 1:50  
- 1:200 IF 1:50 - 1:200

### Source:

Rabbit

### Isotype:

IgG

### Purification:

Affinity purification

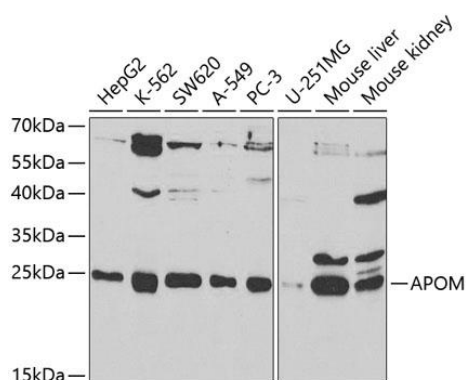
### Immunogen:

Recombinant fusion protein containing a sequence corresponding to amino acids 23-188 of human APOM (NP\_061974.2).

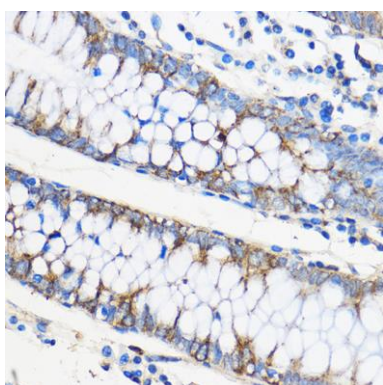
### Storage:

Store at -20°C. Avoid freeze / thaw cycles. Buffer: PBS with 0.02% sodium azide, 50% glycerol, pH7.3.

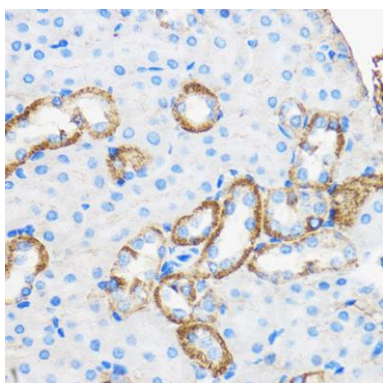
## Product Images



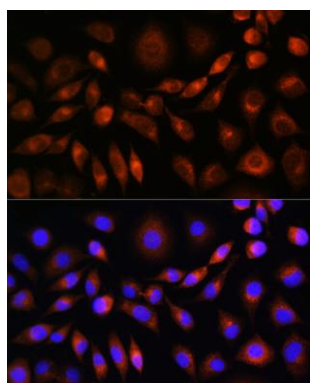
Western blot analysis of extracts of various cell lines, using APOM antibody (CAB5336) at 1:1000 dilution. Secondary antibody: HRP Goat Anti-Rabbit IgG (H+L) (CABS014) at 1:10000 dilution. Lysates/proteins: 25ug per lane. Blocking buffer: 3% nonfat dry milk in TBST. Detection: ECL Basic Kit (CABM00020). Exposure time: 90s.



Immunohistochemistry of paraffin-embedded Human colon using APOM Rabbit pAb (CAB5336) at dilution of 1:50 (40x lens).



Immunohistochemistry of paraffin-embedded Mouse kidney using APOM Rabbit pAb (CAB5336) at dilution of 1:50 (40x lens).



Immunofluorescence analysis of L929 cells using APOM Rabbit pAb (CAB5336) at dilution of 1:100. Blue: DAPI for nuclear staining.