

EFNA1 Rabbit Polyclonal Antibody



CAB5341

Product Information

Size:

20uL, 50uL, 100uL, 200uL

Observed MW:

21-23kDa

Calculated MW:

21kDa/23kDa

Applications:

WB IHC

Reactivity:

Human, Mouse

Antibody Information

Recommended dilutions:

WB 1:500 - 1:2000 IHC 1:50
- 1:200

Source:

Rabbit

Isotype:

IgG

Purification:

Affinity purification

Protein Background

This gene encodes a member of the ephrin (EPH) family. The ephrins and EPH-related receptors comprise the largest subfamily of receptor protein-tyrosine kinases and have been implicated in mediating developmental events, especially in the nervous system and in erythropoiesis. Based on their structures and sequence relationships, ephrins are divided into the ephrin-A (EFNA) class, which are anchored to the membrane by a glycosylphosphatidylinositol linkage, and the ephrin-B (EFNB) class, which are transmembrane proteins. This gene encodes an EFNA class ephrin which binds to the EPHA2, EPHA4, EPHA5, EPHA6, and EPHA7 receptors. Two transcript variants that encode different isoforms were identified through sequence analysis.

Immunogen information

Gene ID:

1942

Uniprot

P20827

Synonyms:

EFNA1; B61; ECKLG; EFL1; EPLG1; LERK-1; LERK1; TNFAIP4; ephrin-A1

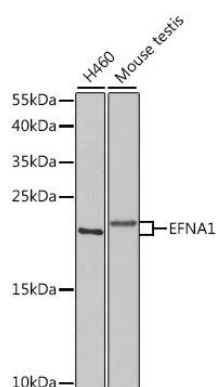
Immunogen:

Recombinant fusion protein containing a sequence corresponding to amino acids 19-182 of human EFNA1 (NP_004419.2).

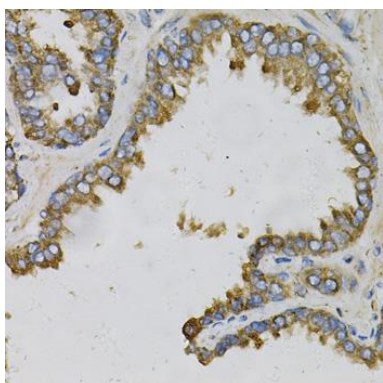
Storage:

Store at -20°C. Avoid freeze / thaw cycles. Buffer: PBS with 0.02% sodium azide, 50% glycerol, pH7.3.

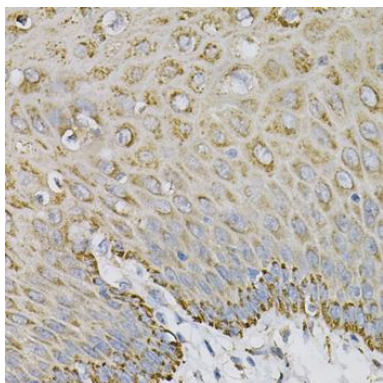
Product Images



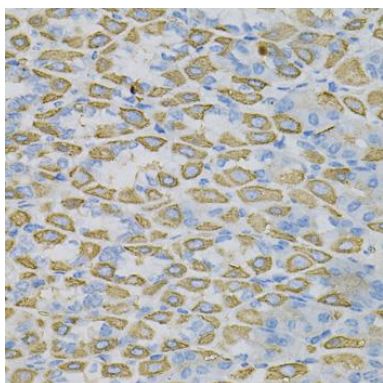
Western blot analysis of extracts of various cell lines, using EFNA1 antibody (CAB5341) at 1:1000 dilution. Secondary antibody: HRP Goat Anti-Rabbit IgG (H+L) (CABS014) at 1:10000 dilution. Lysates/proteins: 25ug per lane. Blocking buffer: 3% nonfat dry milk in TBST. Detection: ECL Basic Kit (CABM00020). Exposure time: 30s.



Immunohistochemistry of paraffin-embedded human prostate using EFNA1 Antibody (CAB5341) at dilution of 1:100 (40x lens).



Immunohistochemistry of paraffin-embedded human esophagus using EFNA1 Antibody (CAB5341) at dilution of 1:100 (40x lens).



Immunohistochemistry of paraffin-embedded mouse stomach using EFNA1 Antibody (CAB5341) at dilution of 1:100 (40x lens).