

LTBR Rabbit Polyclonal Antibody



CAB5351

Product Information

Size:

20uL, 50uL, 100uL, 200uL

Observed MW:

47kDa

Calculated MW:

44kDa/46kDa

Applications:

WB

Reactivity:

Human, Mouse

Antibody Information

Recommended dilutions:

WB 1:500 - 1:2000

Source:

Rabbit

Isotype:

IgG

Purification:

Affinity purification

Protein Background

This gene encodes a member of the tumor necrosis factor receptor superfamily. The major ligands of this receptor include lymphotoxin alpha/beta and tumor necrosis factor ligand superfamily member 14. The encoded protein plays a role in signalling during the development of lymphoid and other organs, lipid metabolism, immune response, and programmed cell death. Activity of this receptor has also been linked to carcinogenesis. Alternatively spliced transcript variants encoding multiple isoforms have been observed.

Immunogen information

Gene ID:

4055

Uniprot

P36941

Synonyms:

LTBR; CD18; D12S370; LT-BETA-R; TNF-R-III; TNFCR; TNFR-RP; TNFR2-RP; TNFR3; TNFRSF3

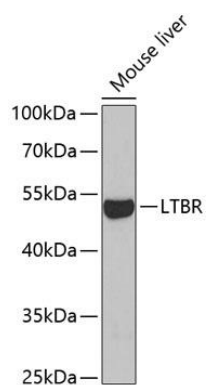
Immunogen:

Recombinant fusion protein containing a sequence corresponding to amino acids 31-227 of human LTBR (NP_002333.1).

Storage:

Store at -20°C. Avoid freeze / thaw cycles. Buffer: PBS with 0.02% sodium azide, 50% glycerol, pH7.3.

Product Images



Western blot analysis of extracts of mouse liver, using LTBR antibody (CAB5351) at 1:1000 dilution. Secondary antibody: HRP Goat Anti-Rabbit IgG (H+L) (CABS014) at 1:10000 dilution. Lysates/proteins: 25ug per lane. Blocking buffer: 3% nonfat dry milk in TBST. Detection: ECL Basic Kit (CABM00020). Exposure time: 30s.