

NEK2 Rabbit Polyclonal Antibody



CAB5355

Product Information

Size:

20uL, 50uL, 100uL, 200uL

Observed MW:

52kDa

Calculated MW:

37kDa/44kDa/50kDa/51kDa

Applications:

WB IHC

Reactivity:

Human, Mouse

Antibody Information

Recommended dilutions:

WB 1:500 - 1:2000 IHC 1:50
- 1:200

Source:

Rabbit

Isotype:

IgG

Purification:

Affinity purification

Protein Background

This gene encodes a serine/threonine-protein kinase that is involved in mitotic regulation. This protein is localized to the centrosome, and undetectable during G1 phase, but accumulates progressively throughout the S phase, reaching maximal levels in late G2 phase. Alternatively spliced transcript variants encoding different isoforms with distinct C-termini have been noted for this gene.

Immunogen information

Gene ID:

4751

Uniprot

P51955

Synonyms:

NEK2; HsPK21; NEK2A; NLK1; PPP1R111; RP67

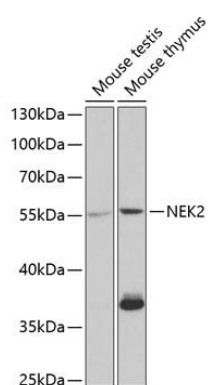
Immunogen:

Recombinant fusion protein containing a sequence corresponding to amino acids 1-135 of human NEK2 (NP_001191112.1).

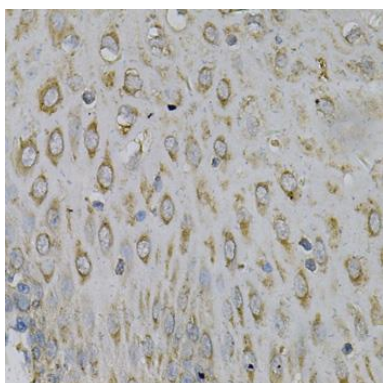
Storage:

Store at -20°C. Avoid freeze / thaw cycles. Buffer: PBS with 0.02% sodium azide, 50% glycerol, pH7.3.

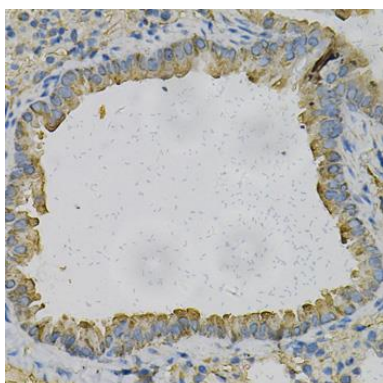
Product Images



Western blot analysis of extracts of various cell lines, using NEK2 antibody (CAB5355) at 1:1000 dilution. Secondary antibody: HRP Goat Anti-Rabbit IgG (H+L) (CABS014) at 1:10000 dilution. Lysates/proteins: 25ug per lane. Blocking buffer: 3% nonfat dry milk in TBST. Detection: ECL Basic Kit (CABM00020). Exposure time: 10s.



Immunohistochemistry of paraffin-embedded human esophagus using NEK2 Antibody (CAB5355) at dilution of 1:100 (40x lens).



Immunohistochemistry of paraffin-embedded mouse lung using NEK2 Antibody (CAB5355) at dilution of 1:100 (40x lens).