

# PSMD7 Rabbit Polyclonal Antibody



CAB5356

## Product Information

### Size:

20uL, 50uL, 100uL, 200uL

### Observed MW:

37kDa

### Calculated MW:

37kDa

### Applications:

WB IHC IF

### Reactivity:

Human, Mouse

## Antibody Information

### Recommended dilutions:

WB 1:500 - 1:2000 IHC 1:50  
- 1:200 IF 1:50 - 1:200

### Source:

Rabbit

### Isotype:

IgG

### Purification:

Affinity purification

## Protein Background

The 26S proteasome is a multicatalytic proteinase complex with a highly ordered structure composed of 2 complexes, a 20S core and a 19S regulator. The 20S core is composed of 4 rings of 28 non-identical subunits; 2 rings are composed of 7 alpha subunits and 2 rings are composed of 7 beta subunits. The 19S regulator is composed of a base, which contains 6 ATPase subunits and 2 non-ATPase subunits, and a lid, which contains up to 10 non-ATPase subunits. Proteasomes are distributed throughout eukaryotic cells at a high concentration and cleave peptides in an ATP/ubiquitin-dependent process in a non-lysosomal pathway. An essential function of a modified proteasome, the immunoproteasome, is the processing of class I MHC peptides. This gene encodes a non-ATPase subunit of the 19S regulator. A pseudogene has been identified on chromosome 17.

## Immunogen information

### Gene ID:

5713

### Uniprot

P51665

### Synonyms:

PSMD7; MOV34; P40; Rpn8; S12

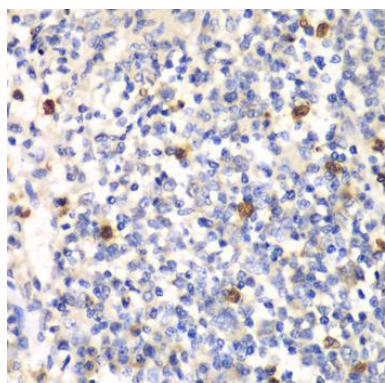
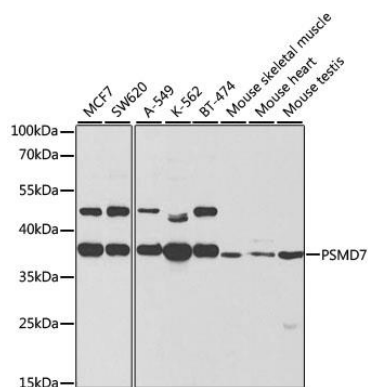
### Immunogen:

Recombinant fusion protein containing a sequence corresponding to amino acids 1-324 of human PSMD7 (NP\_002802.2).

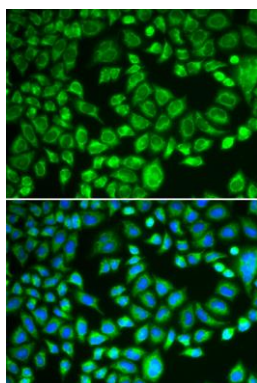
### Storage:

Store at -20°C. Avoid freeze / thaw cycles. Buffer: PBS with 0.02% sodium azide, 50% glycerol, pH7.3.

## Product Images



Immunohistochemistry of paraffin-embedded mouse spleen using PSMD7 antibody (CAB5356) at dilution of 1:100 (40x lens).



Immunofluorescence analysis of MCF-7 cells using PSMD7 antibody (CAB5356). Blue: DAPI for nuclear staining.