

# FOSL1 Rabbit Polyclonal Antibody



CAB5372

## Product Information

### Size:

20uL, 50uL, 100uL, 200uL

### Observed MW:

40kDa

### Calculated MW:

17kDa/29kDa

### Applications:

WB IHC IF

### Reactivity:

Human, Mouse, Rat

## Protein Background

The Fos gene family consists of 4 members: FOS, FOSB, FOSL1, and FOSL2. These genes encode leucine zipper proteins that can dimerize with proteins of the JUN family, thereby forming the transcription factor complex AP-1. As such, the FOS proteins have been implicated as regulators of cell proliferation, differentiation, and transformation. Several transcript variants encoding different isoforms have been found for this gene.

## Immunogen information

### Gene ID:

8061

### Uniprot

P15407

### Synonyms:

FOSL1; FRA; FRA1; fra-1

## Antibody Information

### Recommended dilutions:

WB 1:500 - 1:2000 IHC 1:50  
- 1:200 IF 1:50 - 1:100

### Source:

Rabbit

### Isotype:

IgG

### Purification:

Affinity purification

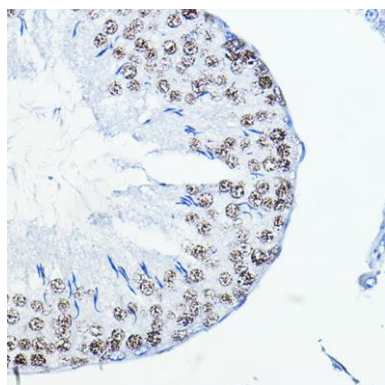
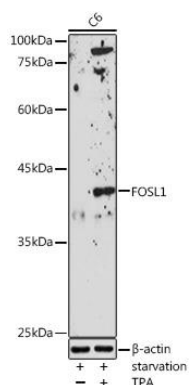
### Immunogen:

Recombinant fusion protein containing a sequence corresponding to amino acids 1-100 of human FOSL1 (NP\_005429.1).

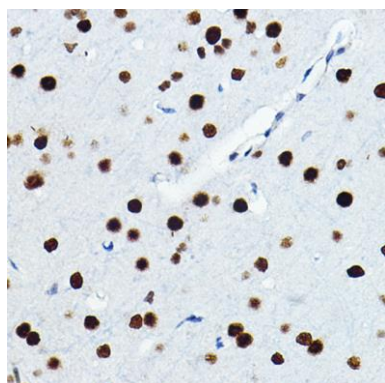
### Storage:

Store at -20°C. Avoid freeze / thaw cycles. Buffer: PBS with 0.02% sodium azide, 50% glycerol, pH7.3.

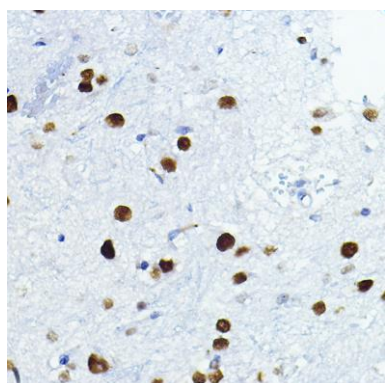
## Product Images



Immunohistochemistry of paraffin-embedded rat testis using FOSL1 Rabbit pAb (CAB5372) at dilution of 1:100 (40x lens).



Immunohistochemistry of paraffin-embedded rat brain using FOSL1 Rabbit pAb (CAB5372) at dilution of 1:100 (40x lens).



Immunohistochemistry of paraffin-embedded mouse spinal cord using FOSL1 Rabbit pAb (CAB5372) at dilution of 1:100 (40x lens).