

GFRA1 Rabbit Polyclonal Antibody



CAB5373

Product Information

Size:

20uL, 50uL, 100uL, 200uL

Observed MW:

60kDa

Calculated MW:

50kDa/51kDa

Applications:

WB IHC IF

Reactivity:

Human, Mouse, Rat

Antibody Information

Recommended dilutions:

WB 1:500 - 1:2000 IHC 1:50
- 1:200 IF 1:50 - 1:200

Source:

Rabbit

Isotype:

IgG

Purification:

Affinity purification

Protein Background

This gene encodes a member of the glial cell line-derived neurotrophic factor receptor (GDNFR) family of proteins. The encoded preproprotein is proteolytically processed to generate the mature receptor. Glial cell line-derived neurotrophic factor (GDNF) and neurturin (NTN) are two structurally related, potent neurotrophic factors that play key roles in the control of neuron survival and differentiation. This receptor is a glycosylphosphatidylinositol (GPI)-linked cell surface receptor for both GDNF and NTN, and mediates activation of the RET tyrosine kinase receptor. This gene is a candidate gene for Hirschsprung disease. Alternative splicing results in multiple transcript variants, at least one of which encodes a preproprotein that is proteolytically processed.

Immunogen information

Gene ID:

2674

Uniprot

P56159

Synonyms:

GFRA1; GDNFR; GDNFRA; GFR-ALPHA-1; RET1L; RETL1; TRNR1

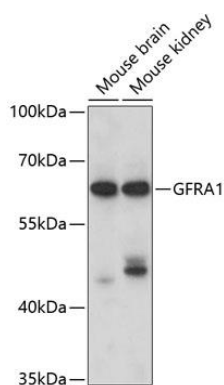
Immunogen:

Recombinant fusion protein containing a sequence corresponding to amino acids 25-280 of human GFRA1 (NP_665736.1).

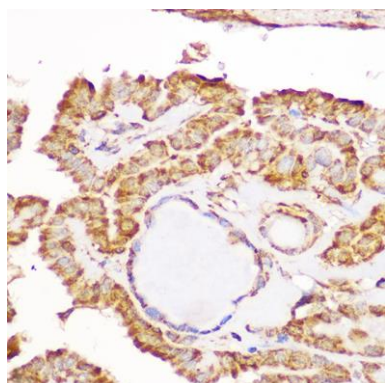
Storage:

Store at -20°C. Avoid freeze / thaw cycles. Buffer: PBS with 0.02% sodium azide, 50% glycerol, pH7.3.

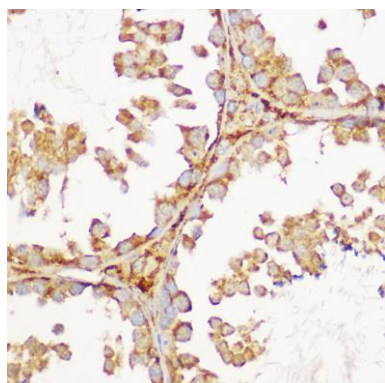
Product Images



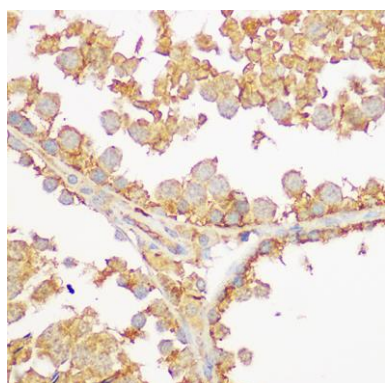
Western blot analysis of extracts of various cell lines, using GFRA1 antibody (CAB5373) at 1:1000 dilution. Secondary antibody: HRP Goat Anti-Rabbit IgG (H+L) (CABS014) at 1:10000 dilution. Lysates/proteins: 25ug per lane. Blocking buffer: 3% nonfat dry milk in TBST. Detection: ECL Basic Kit (CABM00020). Exposure time: 90s.



Immunohistochemistry of paraffin-embedded human thyroid cancer using GFRA1 Rabbit pAb (CAB5373) at dilution of 1:100 (40x lens).



Immunohistochemistry of paraffin-embedded mouse testis using GFRA1 Rabbit pAb (CAB5373) at dilution of 1:100 (40x lens).



Immunohistochemistry of paraffin-embedded rat testis using GFRA1 Rabbit pAb (CAB5373) at dilution of 1:100 (40x lens).