

PA2G4 Rabbit Polyclonal Antibody



CAB5376

Product Information

Size:

20uL, 50uL, 100uL, 200uL

Observed MW:

44kDa

Calculated MW:

38kDa/43kDa

Applications:

WB IHC IF

Reactivity:

Human, Mouse, Rat

Antibody Information

Recommended dilutions:

WB 1:500 - 1:2000 IHC 1:50
- 1:200 IF 1:50 - 1:200

Source:

Rabbit

Isotype:

IgG

Purification:

Affinity purification

Protein Background

This gene encodes an RNA-binding protein that is involved in growth regulation. This protein is present in pre-ribosomal ribonucleoprotein complexes and may be involved in ribosome assembly and the regulation of intermediate and late steps of rRNA processing. This protein can interact with the cytoplasmic domain of the ErbB3 receptor and may contribute to transducing growth regulatory signals. This protein is also a transcriptional co-repressor of androgen receptor-regulated genes and other cell cycle regulatory genes through its interactions with histone deacetylases. This protein has been implicated in growth inhibition and the induction of differentiation of human cancer cells. Six pseudogenes, located on chromosomes 3, 6, 9, 18, 20 and X, have been identified.

Immunogen information

Gene ID:

5036

Uniprot

Q9UQ80

Synonyms:

PA2G4; EBP1; HG4-1; p38-2G4

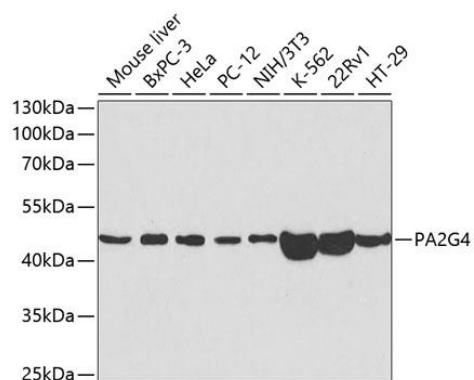
Immunogen:

Recombinant fusion protein containing a sequence corresponding to amino acids 1-394 of human PA2G4 (NP_006182.2).

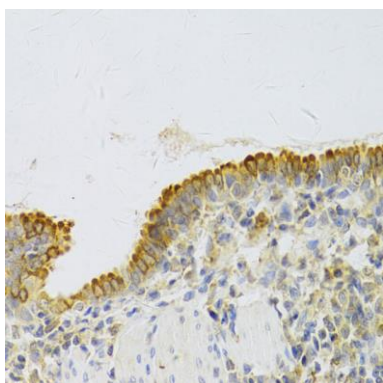
Storage:

Store at -20°C. Avoid freeze / thaw cycles. Buffer: PBS with 0.02% sodium azide, 50% glycerol, pH7.3.

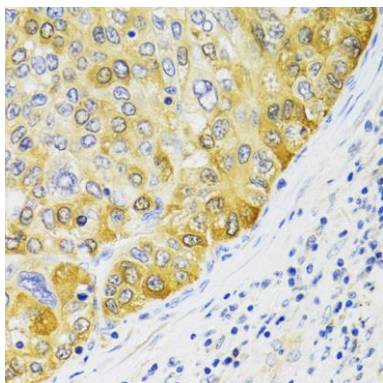
Product Images



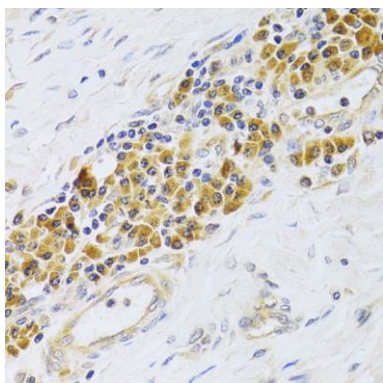
Western blot analysis of extracts of various cell lines, using PA2G4 antibody (CAB5376) at 1:1000 dilution. Secondary antibody: HRP Goat Anti-Rabbit IgG (H+L) (CABS014) at 1:10000 dilution. Lysates/proteins: 25ug per lane. Blocking buffer: 3% nonfat dry milk in TBST.



Immunohistochemistry of paraffin-embedded rat lung using PA2G4 Antibody (CAB5376) at dilution of 1:100 (40x lens).



Immunohistochemistry of paraffin-embedded human liver cancer using PA2G4 Antibody (CAB5376) at dilution of 1:100 (40x lens).



Immunohistochemistry of paraffin-embedded human esophagus using PA2G4 Antibody (CAB5376) at dilution of 1:100 (40x lens).