

SCP2 Rabbit Polyclonal Antibody



CAB5382

Product Information

Size:

20uL, 50uL, 100uL, 200uL

Observed MW:

59kDa

Calculated MW:

6kDa/15kDa/34kDa/50kDa/54kDa/56kDa/58kDa

Applications:

WB IHC

Reactivity:

Human, Mouse

Antibody Information

Recommended dilutions:

WB 1:500 - 1:2000 IHC 1:50 - 1:200

Source:

Rabbit

Isotype:

IgG

Purification:

Affinity purification

Protein Background

This gene encodes two proteins: sterol carrier protein X (SCPx) and sterol carrier protein 2 (SCP2), as a result of transcription initiation from 2 independently regulated promoters. The transcript initiated from the proximal promoter encodes the longer SCPx protein, and the transcript initiated from the distal promoter encodes the shorter SCP2 protein, with the 2 proteins sharing a common C-terminus. Evidence suggests that the SCPx protein is a peroxisome-associated thiolase that is involved in the oxidation of branched chain fatty acids, while the SCP2 protein is thought to be an intracellular lipid transfer protein. This gene is highly expressed in organs involved in lipid metabolism, and may play a role in Zellweger syndrome, in which cells are deficient in peroxisomes and have impaired bile acid synthesis. Alternative splicing of this gene produces multiple transcript variants, some encoding different isoforms.

Immunogen information

Gene ID:

6342

Uniprot

P22307

Synonyms:

SCP2; NLTP; NSL-TP; SCP-2; SCP-CHI; SCP-X; SCPX

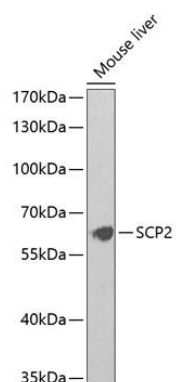
Immunogen:

Recombinant fusion protein containing a sequence corresponding to amino acids 1-322 of human SCP2 (NP_001007099.1).

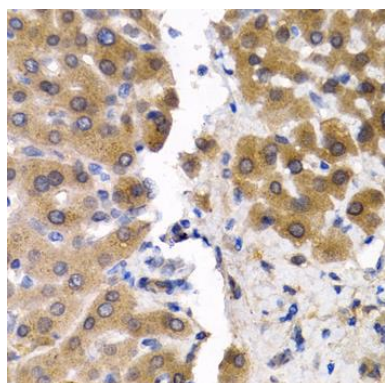
Storage:

Store at -20°C. Avoid freeze / thaw cycles. Buffer: PBS with 0.02% sodium azide, 50% glycerol, pH7.3.

Product Images



Western blot analysis of extracts of mouse liver, using SCP2 Antibody (CAB5382) at 1:1000 dilution. Secondary antibody: HRP Goat Anti-Rabbit IgG (H+L) (CABS014) at 1:10000 dilution. Lysates/proteins: 25ug per lane. Blocking buffer: 3% nonfat dry milk in TBST. Detection: ECL Basic Kit (CABM00020). Exposure time: 90s.



Immunohistochemistry of paraffin-embedded human liver cancer using SCP2 antibody (CAB5382) at dilution of 1:200 (40x lens).