

SFRP2 Rabbit Polyclonal Antibody



CAB5383

Product Information

Size:

20uL, 50uL, 100uL, 200uL

Observed MW:

26kDa

Calculated MW:

33kDa

Applications:

WB IHC

Reactivity:

Mouse, Rat

Protein Background

This gene encodes a member of the SFRP family that contains a cysteine-rich domain homologous to the putative Wnt-binding site of Frizzled proteins. SFRPs act as soluble modulators of Wnt signaling. Methylation of this gene is a potential marker for the presence of colorectal cancer.

Immunogen information

Gene ID:

6423

Uniprot

Q96HF1

Synonyms:

SFRP2; FRP-2; SARP1; SDF-5

Antibody Information

Recommended dilutions:

WB 1:500 - 1:2000 IHC 1:50
- 1:200

Source:

Rabbit

Isotype:

IgG

Purification:

Affinity purification

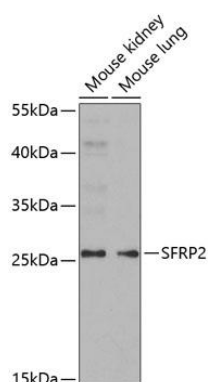
Immunogen:

Recombinant fusion protein containing a sequence corresponding to amino acids 25-295 of human SFRP2 (NP_003004.1).

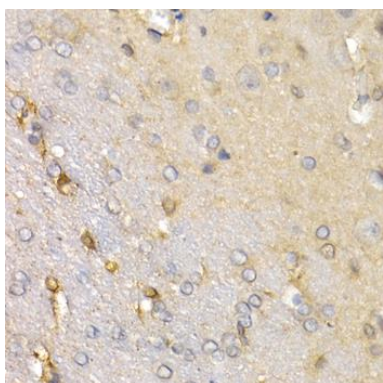
Storage:

Store at -20°C. Avoid freeze / thaw cycles. Buffer: PBS with 0.02% sodium azide, 50% glycerol, pH7.3.

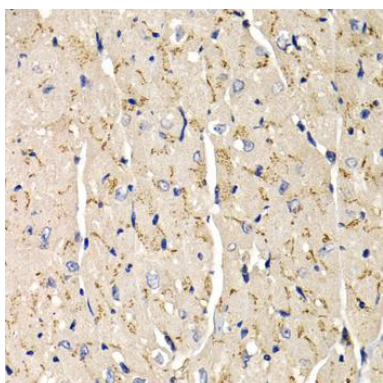
Product Images



Western blot analysis of extracts of various cell lines, using SFRP2 antibody (CAB5383) at 1:1000 dilution. Secondary antibody: HRP Goat Anti-Rabbit IgG (H+L) (CABS014) at 1:10000 dilution. Lysates/proteins: 25ug per lane. Blocking buffer: 3% nonfat dry milk in TBST. Detection: ECL Basic Kit (CABM00020). Exposure time: 90s.



Immunohistochemistry of paraffin-embedded rat brain using SFRP2 antibody (CAB5383) at dilution of 1:200 (40x lens).



Immunohistochemistry of paraffin-embedded mouse heart using SFRP2 antibody (CAB5383) at dilution of 1:200 (40x lens).