

ACTL6A Rabbit Polyclonal Antibody



CAB5387

Product Information

Size:

20uL, 50uL, 100uL, 200uL

Observed MW:

48kDa

Calculated MW:

43kDa/47kDa

Applications:

WB IHC

Reactivity:

Human, Mouse, Rat

Antibody Information

Recommended dilutions:

WB 1:500 - 1:2000 IHC 1:50
- 1:200

Source:

Rabbit

Isotype:

IgG

Purification:

Affinity purification

Protein Background

This gene encodes a family member of actin-related proteins (ARPs), which share significant amino acid sequence identity to conventional actins. Both actins and ARPs have an actin fold, which is an ATP-binding cleft, as a common feature. The ARPs are involved in diverse cellular processes, including vesicular transport, spindle orientation, nuclear migration and chromatin remodeling. This gene encodes a 53 kDa subunit protein of the BAF (BRG1/brm-associated factor) complex in mammals, which is functionally related to SWI/SNF complex in *S. cerevisiae* and *Drosophila*; the latter is thought to facilitate transcriptional activation of specific genes by antagonizing chromatin-mediated transcriptional repression. Together with beta-actin, it is required for maximal ATPase activity of BRG1, and for the association of the BAF complex with chromatin/matrix. Three transcript variants that encode two different protein isoforms have been described.

Immunogen information

Gene ID:

86

Uniprot

O96019

Synonyms:

ACTL6A; ACTL6; ARPN-BETA; Arp4; BAF53A; INO80K

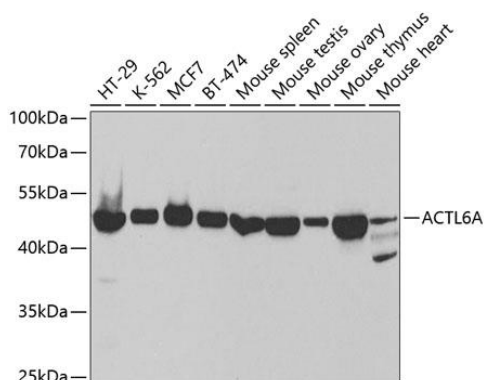
Immunogen:

Recombinant fusion protein containing a sequence corresponding to amino acids 1-280 of human ACTL6A (NP_004292.1).

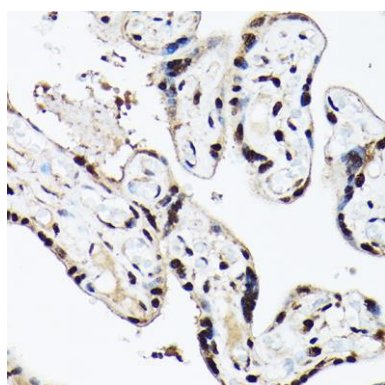
Storage:

Store at -20°C. Avoid freeze / thaw cycles. Buffer: PBS with 0.02% sodium azide, 50% glycerol, pH7.3.

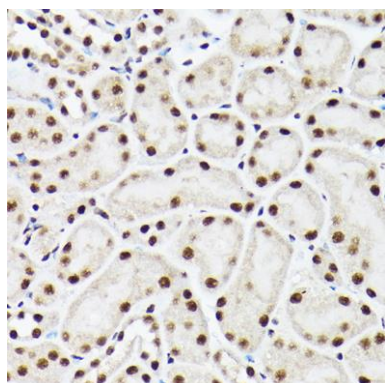
Product Images



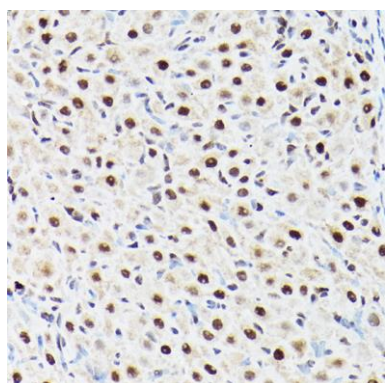
Western blot analysis of extracts of various cell lines, using ACTL6A antibody (CAB5387) at 1:1000 dilution. Secondary antibody: HRP Goat Anti-Rabbit IgG (H+L) (CABS014) at 1:10000 dilution. Lysates/proteins: 25ug per lane. Blocking buffer: 3% nonfat dry milk in TBST. Detection: ECL Basic Kit (CABM00020). Exposure time: 30s.



Immunohistochemistry of paraffin-embedded human placenta using ACTL6A Rabbit pAb (CAB5387) at dilution of 1:100 (40x lens).



Immunohistochemistry of paraffin-embedded mouse kidney using ACTL6A Rabbit pAb (CAB5387) at dilution of 1:100 (40x lens).



Immunohistochemistry of paraffin-embedded rat ovary using ACTL6A Rabbit pAb (CAB5387) at dilution of 1:100 (40x lens).