

AMPH Rabbit Polyclonal Antibody



CAB5389

Product Information

Size:

20uL, 50uL, 100uL, 200uL

Observed MW:

125KDa

Calculated MW:

71kDa/76kDa

Applications:

WB IF

Reactivity:

Human, Mouse, Rat

Protein Background

This gene encodes a protein associated with the cytoplasmic surface of synaptic vesicles. A subset of patients with stiff-man syndrome who were also affected by breast cancer are positive for autoantibodies against this protein. Alternate splicing of this gene results in two transcript variants encoding different isoforms. Additional splice variants have been described, but their full length sequences have not been determined. A pseudogene of this gene is found on chromosome 11.

Immunogen information

Gene ID:

273

Uniprot

P49418

Synonyms:

AMPH; AMPH1

Antibody Information

Recommended dilutions:

WB 1:500 - 1:2000 IF 1:50 - 1:200

Source:

Rabbit

Isotype:

IgG

Purification:

Affinity purification

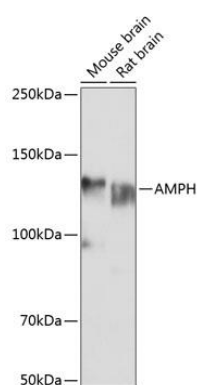
Immunogen:

Recombinant fusion protein containing a sequence corresponding to amino acids 340-620 of human AMPH (NP_001626.1).

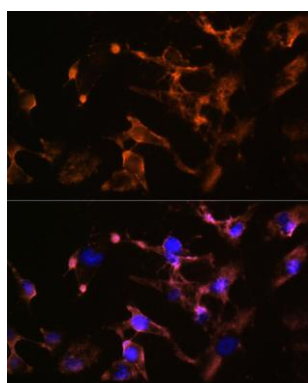
Storage:

Store at -20°C. Avoid freeze / thaw cycles. Buffer: PBS with 0.02% sodium azide, 50% glycerol, pH7.3.

Product Images



Western blot analysis of extracts of various cell lines, using AMPH Polyclonal Antibody (CAB5389) at 1:1000 dilution. Secondary antibody: HRP Goat Anti-Rabbit IgG (H+L) (CABS014) at 1:10000 dilution. Lysates/proteins: 25ug per lane. Blocking buffer: 3% nonfat dry milk in TBST. Detection: ECL Basic Kit (CABM00020). Exposure time: 1s.



Immunofluorescence analysis of U-251 MG cells using AMPH Rabbit pAb (CAB5389) at dilution of 1:100 (40x lens). Blue: DAPI for nuclear staining.